



**CMS40**  
Mechanically Fixed Brick Slip  
Cladding Support System

# CMS40

Mechanically Fixed Brick Slip  
Cladding Support System

# CONTENT

<b>CMS40 Mechanically Fixed Brick Slip System</b>	<b>02</b>
<b>Natural, Sustainable &amp; Durable</b>	<b>03</b>
<b>Features &amp; Benefits:</b>	<b>04</b>
<b>System components</b>	<b>05</b>
<b>Brick slips - Selection</b>	<b>06</b>
<b>Installation guidelines</b>	<b>07</b>
<b>Standard details</b>	<b>08</b>
<b>Project images / case studies</b>	<b>10</b>
<b>System Maintenance &amp; Warranty</b>	<b>11</b>
<b>Testing, certification &amp; accreditation</b>	<b>12</b>
<b>About Cladmate</b>	<b>13</b>

## CMS40 MECHANICALLY FIXED BRICK SLIP SYSTEM

CMS40 is a mechanically fixed brick slip system that combines insulated and rain screen cladding techniques. This system is designed to be lightweight, cost-effective, and innovative and has an A1 Fire Rating, indicating high fire resistance. It's suitable for various buildings and offers easy installation and low maintenance.

The system is often chosen for its durability and ability to withstand different weather conditions. Despite being lightweight, it offers a durable alternative to traditional brickwork while maintaining aesthetic appeal. Additionally, the emphasis on being completely fireproof underscores the importance of safety and compliance with building regulations.



- ✓ The unique combination of stone wool and brick slip support system
- ✓ Real clay brick slips used to create an advanced innovative brick slip facade system
- ✓ Mechanically fixed brick cladding - transforms traditional brickwork into an advanced rain-screen cladding
- ✓ Suitable for buildings over 18m; can be safely used in buildings of any height

CMS40 MF Brick Slip System can be installed on almost any surface, provided that the substrate is structurally sound, suitable and can support the weight.

Masonry, Brickwork	Blockwork	Concrete
Light Steel Frame	Timber Frame	SIP

Suitable for both new and existing buildings, refurbishment projects.



## REAL BRICK



### Natural

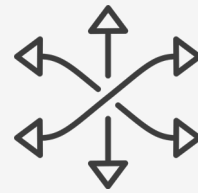
The same Look, Feel, and Durability as a traditional full brick but lighter in weight.



### Sustainable

Brick cladding requires less clay and mortar to build. Therefore, the use of raw materials such as mortar, sand, water, and cement required to produce clay pieces is reduced.

As a natural material, clay bricks can be easily recycled by the end of their life cycle.



### Versatile

Brick slips can be sourced by cutting full bricks into various sizes and producing them as slips directly to reduce cutting loss.

Plenty of options available to choose the bricks in the thickness (20 - 65mm) and format required.



### Lightweight

The use of brick slips significantly reduces the use of materials; thus the overall weight of the cladding onto the building will get reduced by around 40 - 60 %.



### Non combustible

Clay bricks have an exemption from testing and are automatically A1 non-combustible as per BS EN 13501-1:2018, the best fire classification achievable by construction products.

## CMS40 FEATURES & BENEFITS:

Key features and advantages of the CMS40 MF Slip system include:

- ✔ **Mechanical Fixing:** The system utilises mechanical fixing methods, ensuring a secure and stable installation.
- ✔ **Low Maintenance:** The low-maintenance nature of the system further contributes to its cost-effectiveness over the long term.
- ✔ **Rainscreen Cladding:** The rain-screen system helps manage moisture and improve the building's overall thermal performance when combined with thermal insulation.
- ✔ **Lightweight and Durable:** The system provides a lightweight alternative to traditional brickwork while still offering durability.
- ✔ **Innovative Design:** Combining mechanical fixing and rain screen technology contributes to an innovative approach to facade systems.
- ✔ **Cost-Effective:** The system is designed to be cost-effective, potentially saving users money during installation and maintenance.
- ✔ **A1 Fire Rating:** The A1 Fire Rating indicates that the system is non-combustible and offers high fire resistance.
- ✔ **Aesthetic Appeal:** The system aims to maintain aesthetic qualities while providing a modern and functional cladding solution.
- ✔ **Easy Installation:** The CMS40 MF Slip system is designed for easy installation, potentially reducing skilled labour and time costs. Not weather dependent and minimal wet trade.
- ✔ **Choice of Brick Slips:** Compatible with 22 (± 2mm) brick slips as a standard and can be used with brick slips up to 65mm thick..

The system has been engineered to address various needs in the construction industry, offering an efficient and reliable solution for brick slip cladding while prioritising fire safety, aesthetics, and practicality.

## THERMAL PERFORMANCE

By integrating suitable insulation materials, an air gap, and thermal isolators for brackets, the CMS40 improves the thermal performance of the wall assembly.

This implies that the system will effectively manage indoor temperatures, lower energy usage for heating and cooling, and contribute to a more comfortable and energy-efficient living or working environment.

## RAINCLAD®

High-Performance A1 Non-Combustible Thermal and Acoustic Insulation for Rainscreen Cladding Applications.

Rainclad is a non-combustible cladding insulation designed and developed by our highly experienced engineers for optimal performance in both ventilated and non-ventilated cladding systems, as well as sealed systems such as curtain walling.

Whatever your external wall insulation requirements may be, Rainclad is the answer.



To obtain further information about Rainclad, you can scan the QR code provided.



# CMS40 COMPONENTS:

## Fixings

EJOT fixings used for substrate attachment, bracket to rail connection, and rail to rail attachment

## T/L Rail

Cladmate T/L Rails  
Aluminium Alloy 6063 T6 / Stainless Steel Grade 304

## Brick Spacer

Vertical Pointing Plug

## Double Helping Hand Bracket

Cladmate Fortis Double Brackets  
in sizes 40-300mm, Anodised  
Aluminium Alloy 6063 T6 / Stainless  
Steel Grade 304

## Single Helping Hand Bracket

Cladmate Fortis Single Brackets  
in sizes 40-300mm, Anodised  
Aluminium Alloy 6063 T6 / Stainless  
Steel Grade 304

## Horizontal Support Rail

Horizontal Support Rails provided  
for Top, Middle, and Bottom  
Electrophoresis Coated Anodised  
Aluminium Alloy 6063 T6

## Brick Slip & Pointing Mortar

Parex Historic Mortar Lime Based,  
available in 12 colours

## EJOT Fixings

EJOT fixings used for substrate  
attachment, bracket to rail connection,  
and rail to rail attachment

## BRICK SLIP SELECTION:

CMS40 will accommodate most of the brick slips of metric, imperial and long format. Bricks are cut to a 22+/-2 mm thickness as a standard. The system is suitable to use brick slips with thickness up to maximum 65mm.



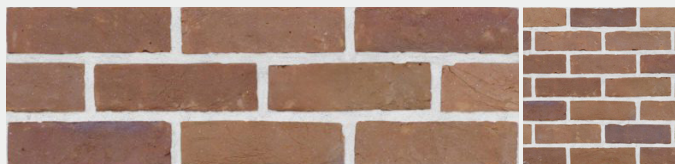
Alaska Sintered



Lucca



Cinder Coal



Perton Orange



Rustic Yellow



Synthesis



For more brick, brick slip, corner slip, grooved and grooved corner slip options, please download our brochure.



+44 0 20 3961 3000

info@terrabricks.co.uk

[f](#) [t](#) [@](#) [in](#) terrabricks\_

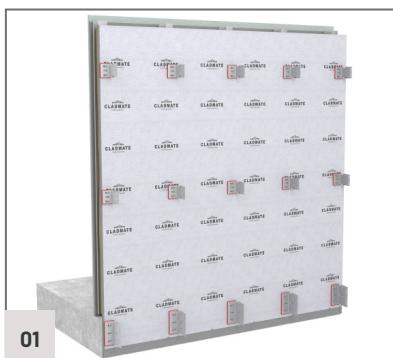
[www.terrabricks.co.uk](http://www.terrabricks.co.uk)

[Terra Bricks](#)

<https://www.terrabricks.co.uk>

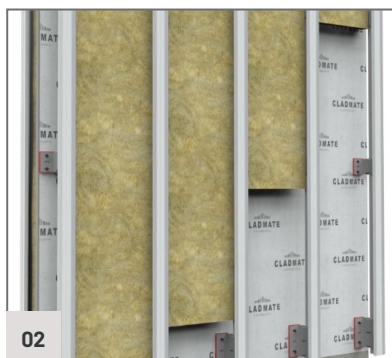
www.clademate.co.uk | Your Solutions Partner

## INSTALLATION GUIDELINES:



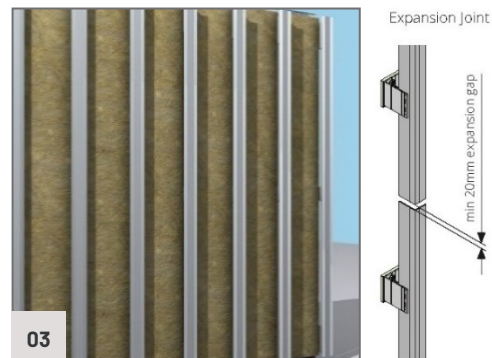
### 01. Fix Helping Hand Brackets

Fix Helping Hand Brackets to the substrate. Keep a maximum spacing of 600mm horizontally and 1200mm



### 02. Install External Wall Insulation

Place stone wool insulation in a staggered arrangement, securing it with a central washer and perimeter fixings positioned between adjoining slabs.



### 03. Fix T/L Rails

Attach T/L rails to the Helping Hand Brackets. Employ one bracket as a fixed anchor point and brackets with slotted points for the remaining connections.



### 04. Fix Horizontal Support Rails

Secure Horizontal Support Rails to the T/L rails. Align them precisely with the brick slips, creating a 10mm gap. Utilize the gauge tool for streamlined attachment of multiple rail courses.



### 05. Insert Brick Slips

Position brick slips meticulously between the rails, following the upper and lower grooves for guidance. Preserve a consistent 10mm gap by employing metal brick spacers.

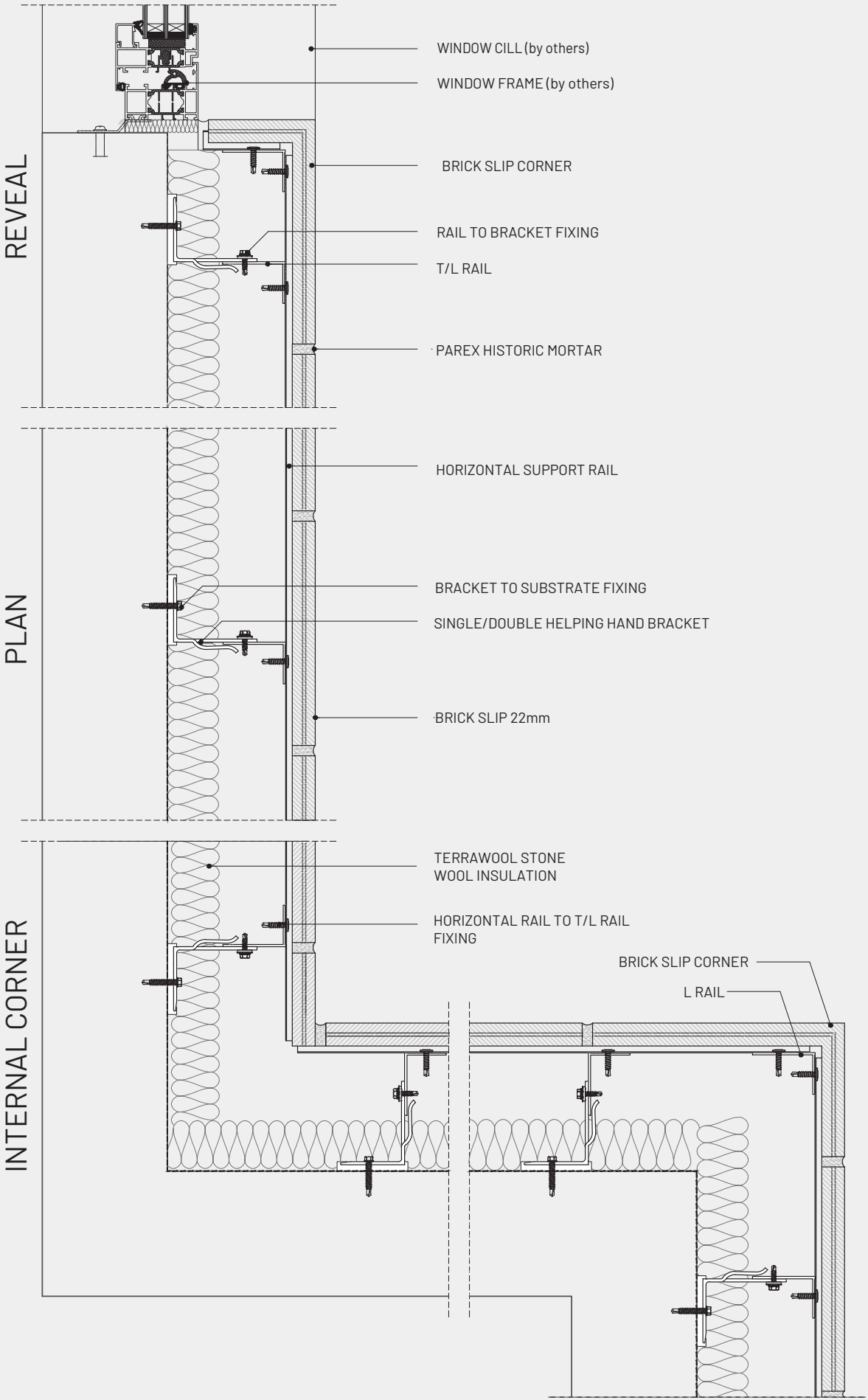


### 06. Apply Mortar

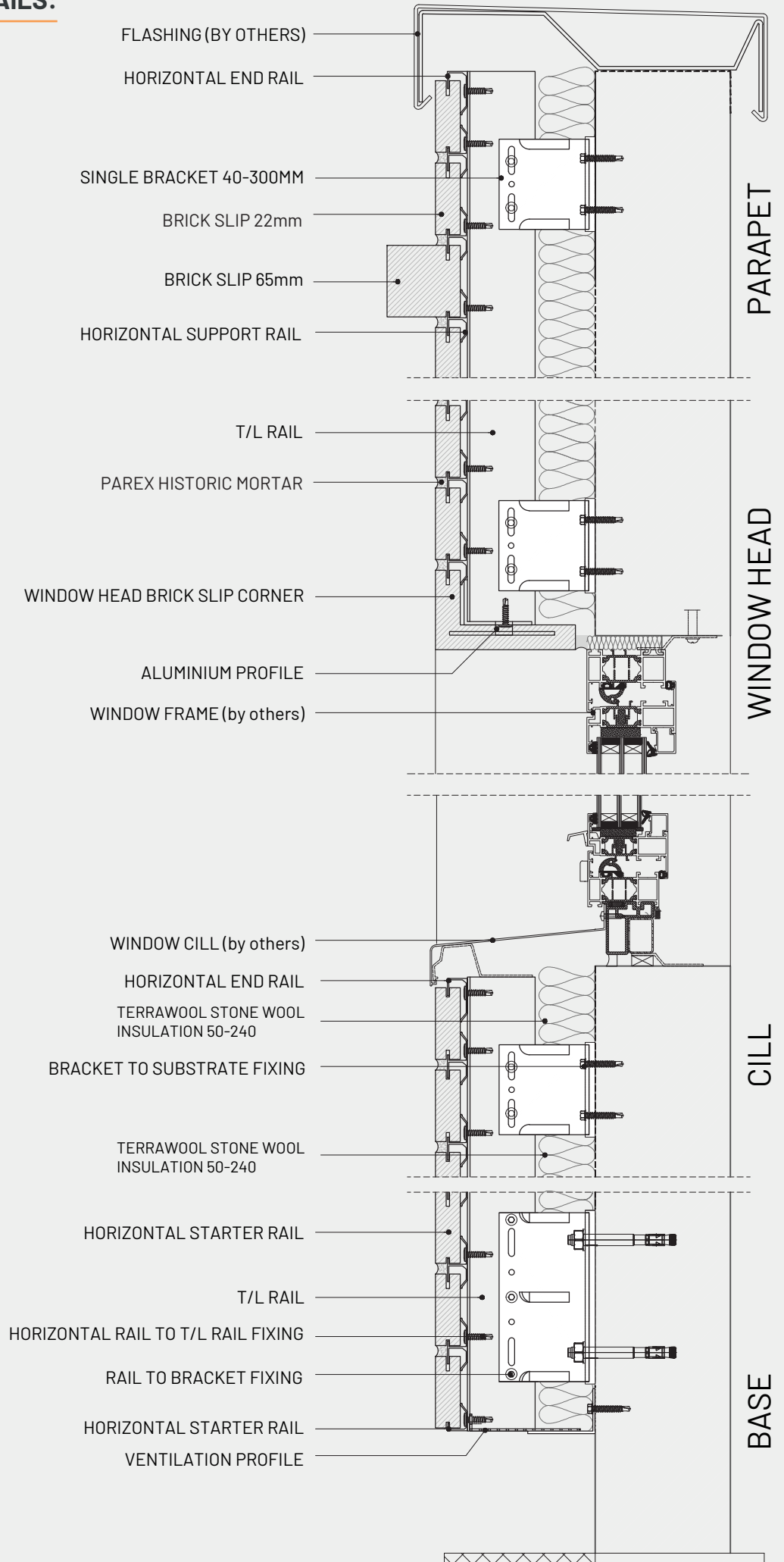
Upon completing the placement of brick slips, inject the joints with Parex Historic mortar to achieve an authentic clay brick appearance.



**CMS40**  
**STANDARD DRAWINGS:**



## SECTION DETAILS:





Brick Used: TER-IS003-N0C15S

## **SYSTEM MAINTENANCE & WARRANTY:**

---

### **REPAIRS:**

In the unlikely event of damaged or broken slips, they can be easily replaced by carefully removing mortar pointing around the slip lifting it upwards to free the bottom from of the support rail and sliding it out base first.

Damage to the horizontal supporting rails may require removal of a section of slips to remediate. Unbroken slips may be able to be re-used.

### **MAINTENANCE:**

The CMS40 system requires little or no maintenance. Check mortar pointing at 5-year intervals as part of a maintenance review.

Refer to Cladmate for guidance on specific topics if required.

### **SYSTEM WARRANTY:**

Cladmate provides a durability warranty on CMS40 Brick Slip Cladding Panels subject to correct installation. This excludes the supporting substrate.

For further information on warranty details and period for these components please contact Cladmate Technical Services at [technical@cladmate.co.uk](mailto:technical@cladmate.co.uk) and include project details.

### **HEALTH AND SAFETY:**

The Health and Safety at Work Act, Consumer Protection Act and other legislation require us to provide relevant information regarding our products in respect of handling, processing, storage, transportation, or disposal without risk to health.

### **RECYCLING:**

Despite the potential longevity of fired clay products, they are sometimes demolished well before the end of their useful life. Most of the aluminium used in carrier and support rail extrusions is from recycled sources and can be recycled by a licenced company.



## CLADMATE PARTNERS



## CERTIFICATION & ACCREDITATION

- ✓ Fire rating A1 & A2
- ✓ CE Manufacturing control
- ✓ ISO 9001 & 14001
- ✓ CWCT - Impact and wind resistance
- ✓ BBA



## **ABOUT CLADMATE:**

Cladmate, established in 2019 as part of KNT Group, is a leading manufacturer and supplier of rainscreen cladding support and external wall insulation systems in the UK and in Europe.

- ✔ Innovative and Safe Solutions
- ✔ Experienced and Dedicated Team
- ✔ Convenient London Plant

Your trusted partner for reliable and efficient cladding solutions.  
Together, let's shape the future of the facade industry.

## **WHAT MAKES CLADMATE UNIQUE?**

- ✔ Comprehensive Turnkey Solutions
- ✔ Robust Expertise
- ✔ Continuous Innovation
- ✔ Reliable High Availability
- ✔ Environmentally-Conscious Manufacturing

### **HEAD OFFICE**

1 Bedlam Mews  
Lambeth, London SE11 6DF

### **SHOWROOM**

Unit 1 Mirravale Estate  
Selinas Lane,  
Dagenham  
RM8 1YY

### **EASY WAY TO ORDER**

- ☎ 020 3949 8826
- ✉ [Orders@cladmate.co.uk](mailto:Orders@cladmate.co.uk)
- 🌐 [shop.cladmate.co.uk](http://shop.cladmate.co.uk)

**FOLLOW US**

**f** **@** **t** **in** **P**  
**@cladmate\_uk**


# RAINCLAD<sup>®</sup>


"where power of natural stone meets comfort"






[www.cladmate.co.uk](http://www.cladmate.co.uk)

 **Head Office**  
1 Bedlam Mews,  
London, SE11 6DF

 **Warehouse**  
Unit 1, Mirravale Trading  
Estate, Selinas Lane,  
Dagenham, London RM8 1YY

 **020 3949 8826**  
[Info@cladmate.co.uk](mailto:Info@cladmate.co.uk)