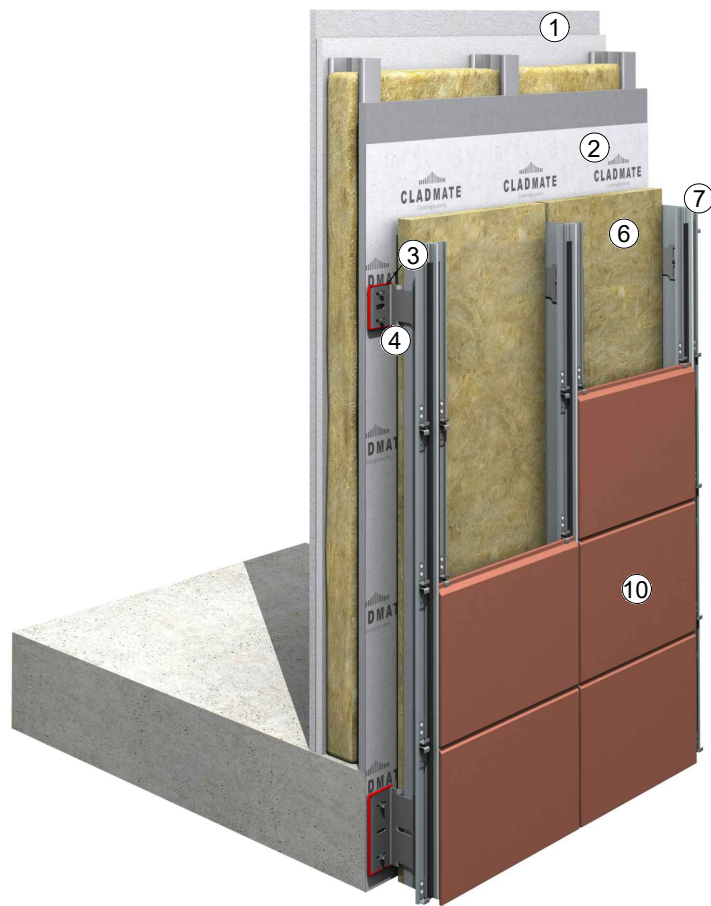


# **CLADMATE**

CladdingSystems


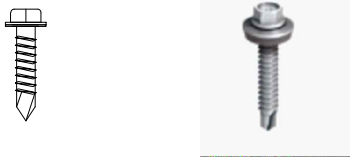
## **CMS21**

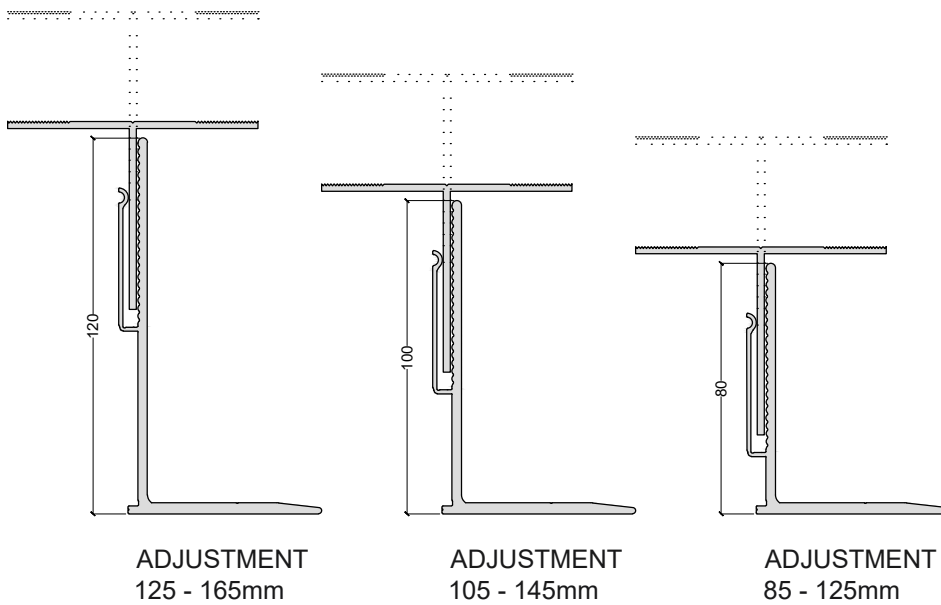
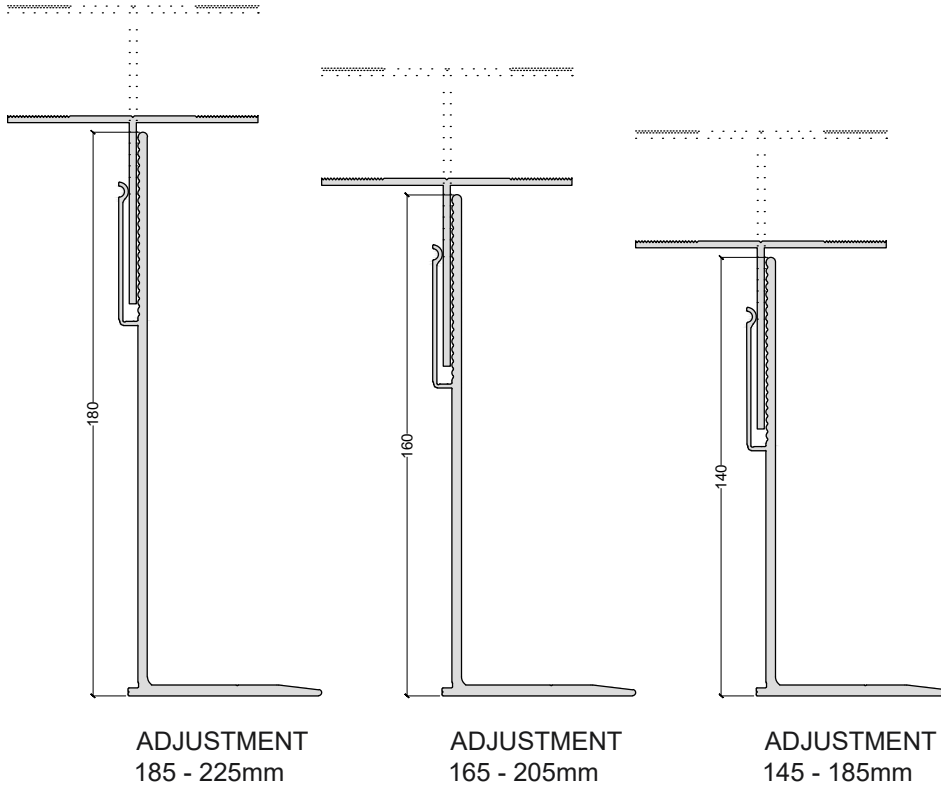
DOUBLE SKIN TERRACOTA  
CLADDING SUPPORT SYSTEM



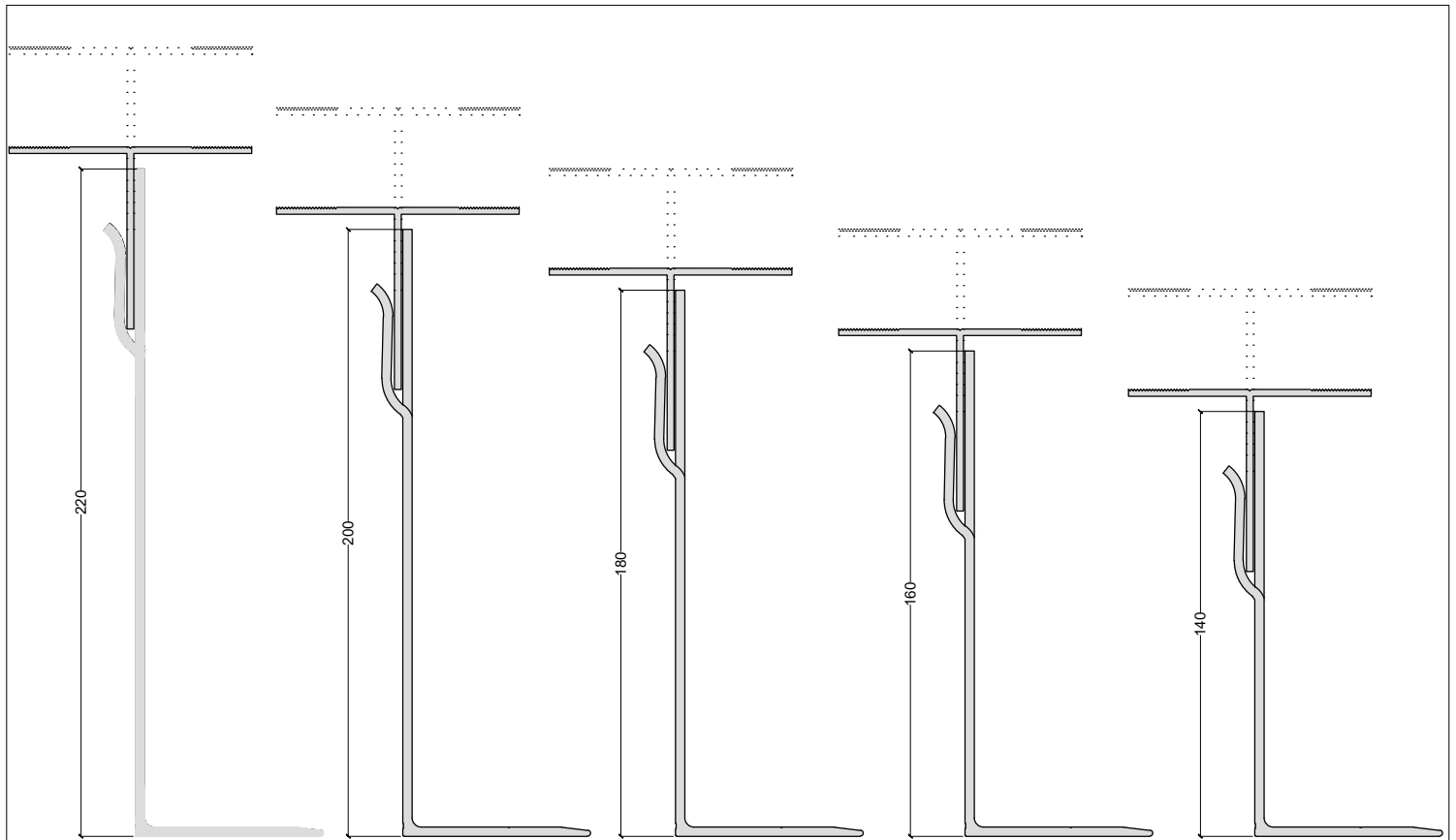
1. CONCRETE / BLOCK WORK
2. BREATHER MEMBRANE
3. THERMAL ISOLATOR
4. SUPPORT BRACKET
5. PRIMARY FIXING
6. THERMAL INSULATION
7. T / L / CORNER PROFILE
8. SELF DRILL SCREW
9. DOUBLE SIDED TAPE / NORTON TAPE
10. CLADDING (TERRACOTTA)
11. RIVET/SCREW
12. VENTILATION
13. EPDM
14. CLIP

code	name	profile features	code	name	profile features
VTC-01-85-3000	Terracotta Channel T Profile		VLC-01-35-3000	Terracotta Channel L Profile	
BCP-01-60-3000	Terracotta Box Corner Profile		VCH-01-20-3000	Terracotta End Clip	
VCC-01-57-3000	Closed Corner Profile		VOC-01-42-3000	Open Corner Profile	
			EDPM Infill		
			<p>EPDM Rubber Profile      Pin</p>		
			S21-EPDM-50m		
			Stainless Steel Rivet		
		Steel Dowel			4x10 Rivet
		Plastic Dowel			4,8x25 Rivet
			TP01		
			colour/finish : RAL TBC		

code	name	profile features	code	name	profile features
	<b>Self Drive Screw</b> 3,9x19 YSB (M.U.V)    4,8x16 YSB (M.U.V) 			<b>Steel Frame Primary Fixing (Bi-met Fastener Washer)</b> 	
	..... .....			JT3-3-6.3-38-S16 JT3-3-6.3-50-S16	



BRACKET	ADJUSTMENT RANGE (mm)
SMART BRACKET 180	185 - 225
SMART BRACKET 160	165 - 205
SMART BRACKET 140	145 - 185
SMART BRACKET 120	125 - 165
SMART BRACKET 100	105 - 145
SMART BRACKET 80	85 - 125



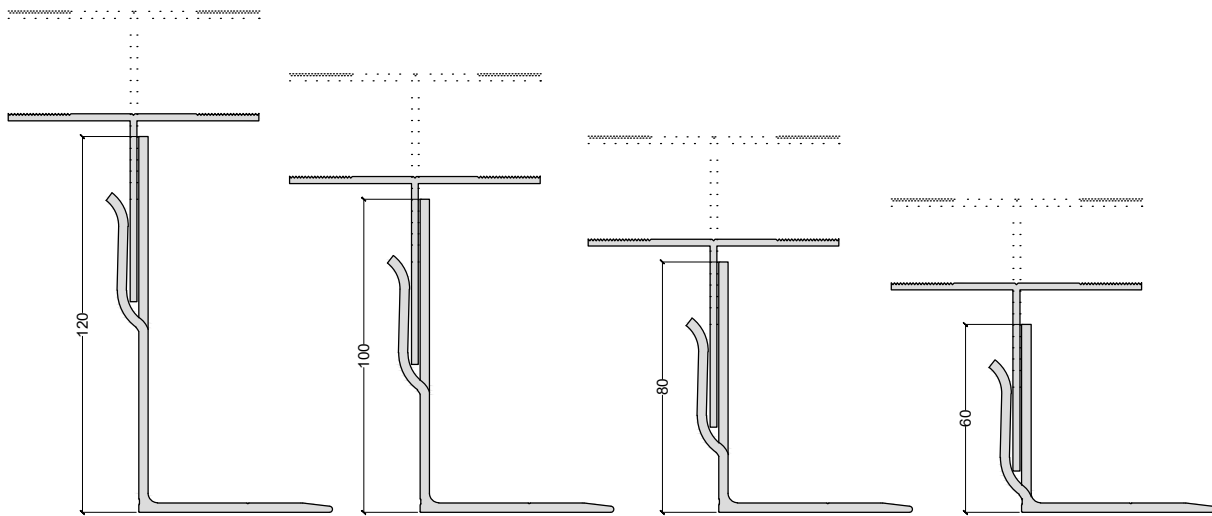
ADJUSTMENT  
225 - 265mm

ADJUSTMENT  
205 - 245mm

ADJUSTMENT  
185 - 225mm

ADJUSTMENT  
165 - 205mm

ADJUSTMENT  
145 - 175mm



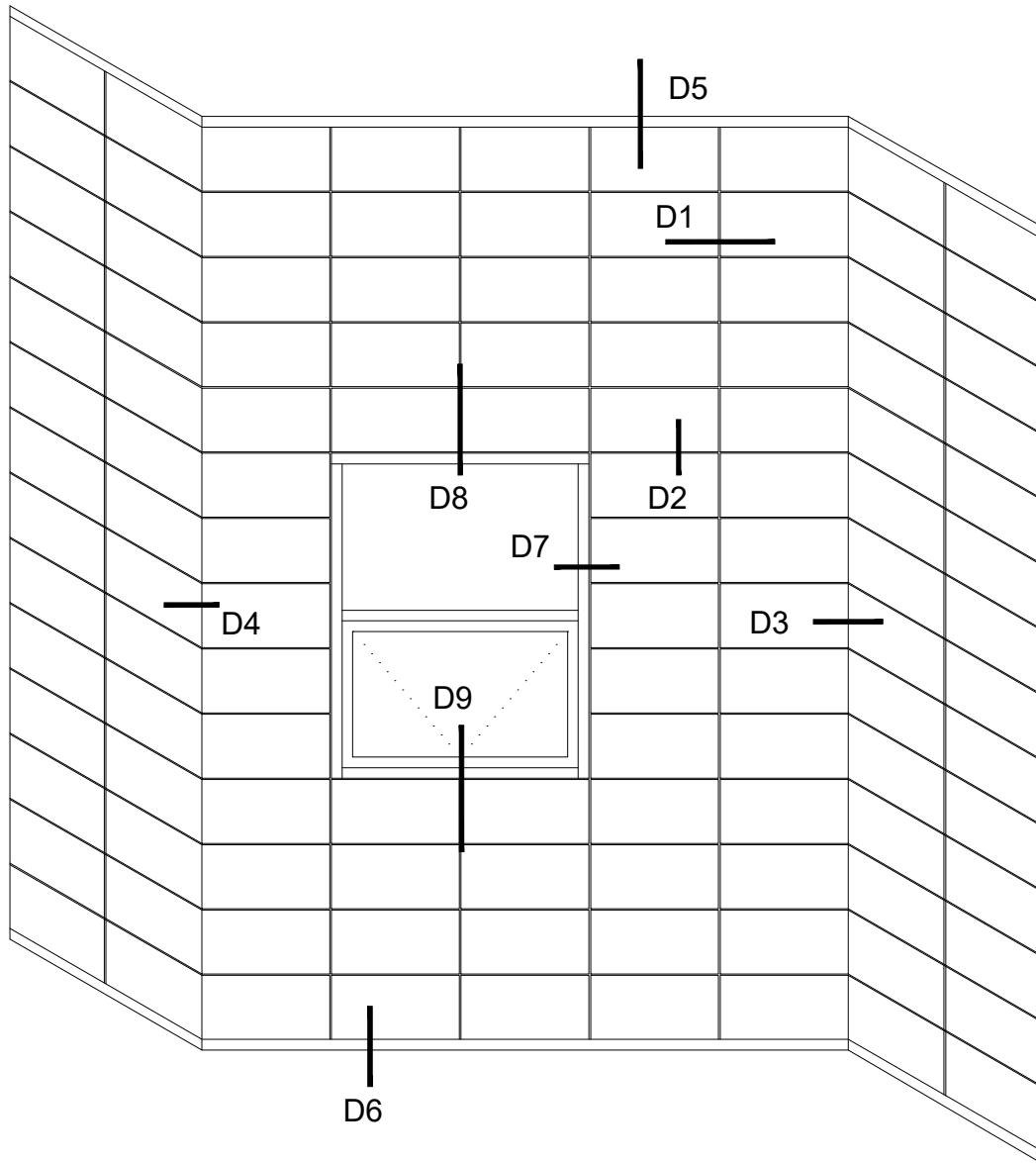
ADJUSTMENT  
125 - 165mm

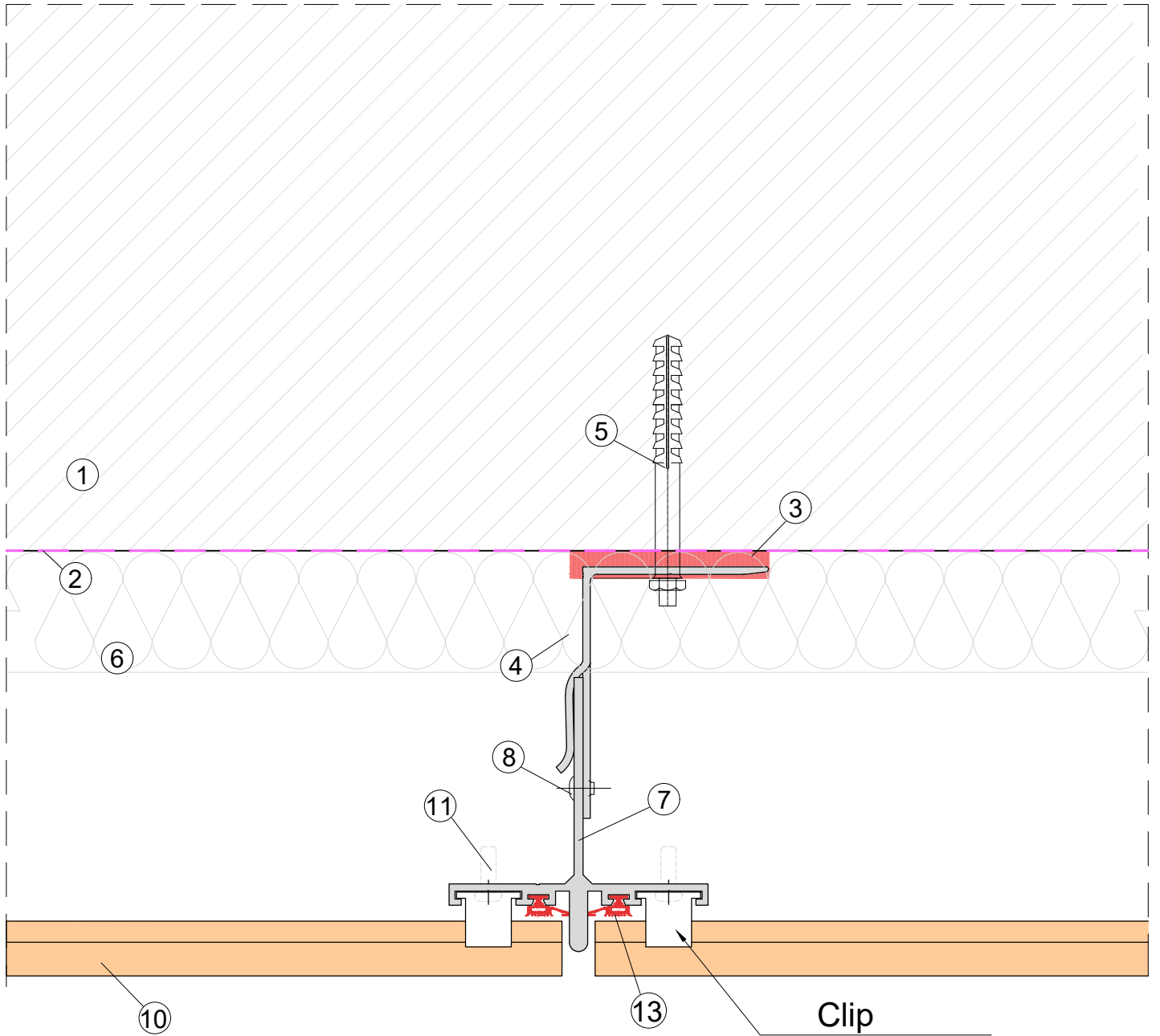
ADJUSTMENT  
105 - 145mm

ADJUSTMENT  
85 - 125mm

ADJUSTMENT  
65 - 105mm

BRACKET	ADJUSTMENT RANGE (mm)
FORTIS BRACKET 220	225 - 265
FORTIS BRACKET 200	205 - 245
FORTIS BRACKET 180	185 - 225
FORTIS BRACKET 160	165 - 205
FORTIS BRACKET 140	145 - 185
FORTIS BRACKET 120	125 - 165
FORTIS BRACKET 100	105 - 145
FORTIS BRACKET 80	85 - 125
FORTIS BRACKET 60	65 - 105





**LEGEND**

1.CONCRETE / BLOCK WORK 2.BREATHER MEMBRANE 3.THERMAL ISOLATOR 4.SUPPORT BRACKET 5.PRIMARY FIXING 6.THERMAL INSULATION  
 7.T / L / CORNER PROFILE 8.SELF DRILL SCREW 9.DOUBLE SIDED TAPE / NORTON TAPE 10.CLADDING (HPL) 11.RIVET/SCREW 12.VENTILATION 13.RAIL PROFILE 14.CLIP



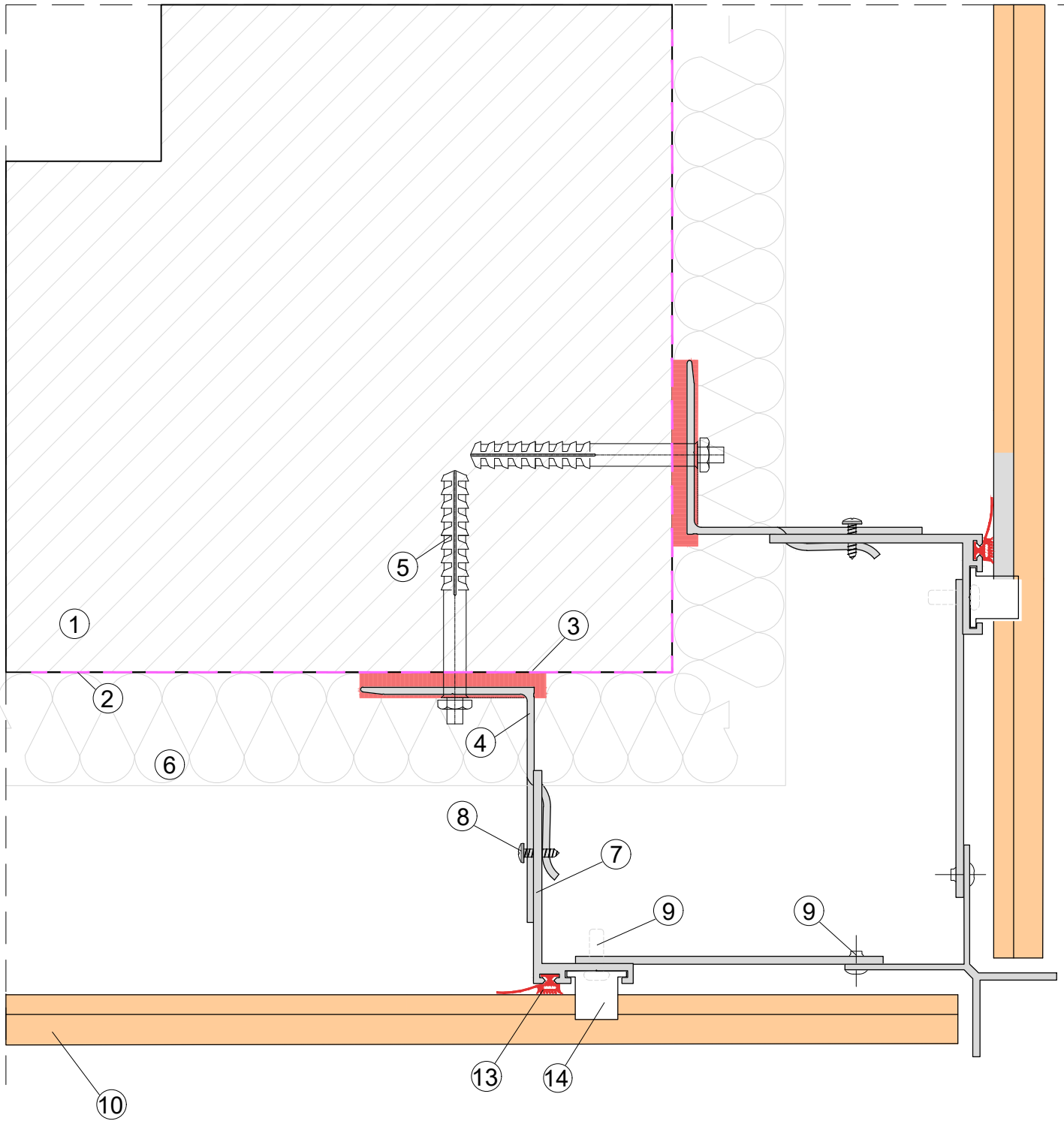
system title:  
**DOUBLE SKIN TERRACOTTA  
 CLADDING SUPPORT SYSTEM**

drawing title:  
**DETAIL 1**

date:  
**Apr 2019** scale:  
**NTS**

system no: drawing no: revision:  
**CMS-21 02 01**





**LEGEND**

- 1.CONCRETE / BLOCK WORK 2.BREATHER MEMBRANE 3.THERMAL ISOLATOR 4.SUPPORT BRACKET 5.PRIMARY FIXING 6.THERMAL INSULATION  
 7.T / L / CORNER PROFILE 8.SELF DRILL SCREW 9.DOUBLE SIDED TAPE / NORTON TAPE 10.CLADDING (HPL) 11.RIVET/SCREW 12.VENTILATION 13.RAIL PROFILE 14.CLIP



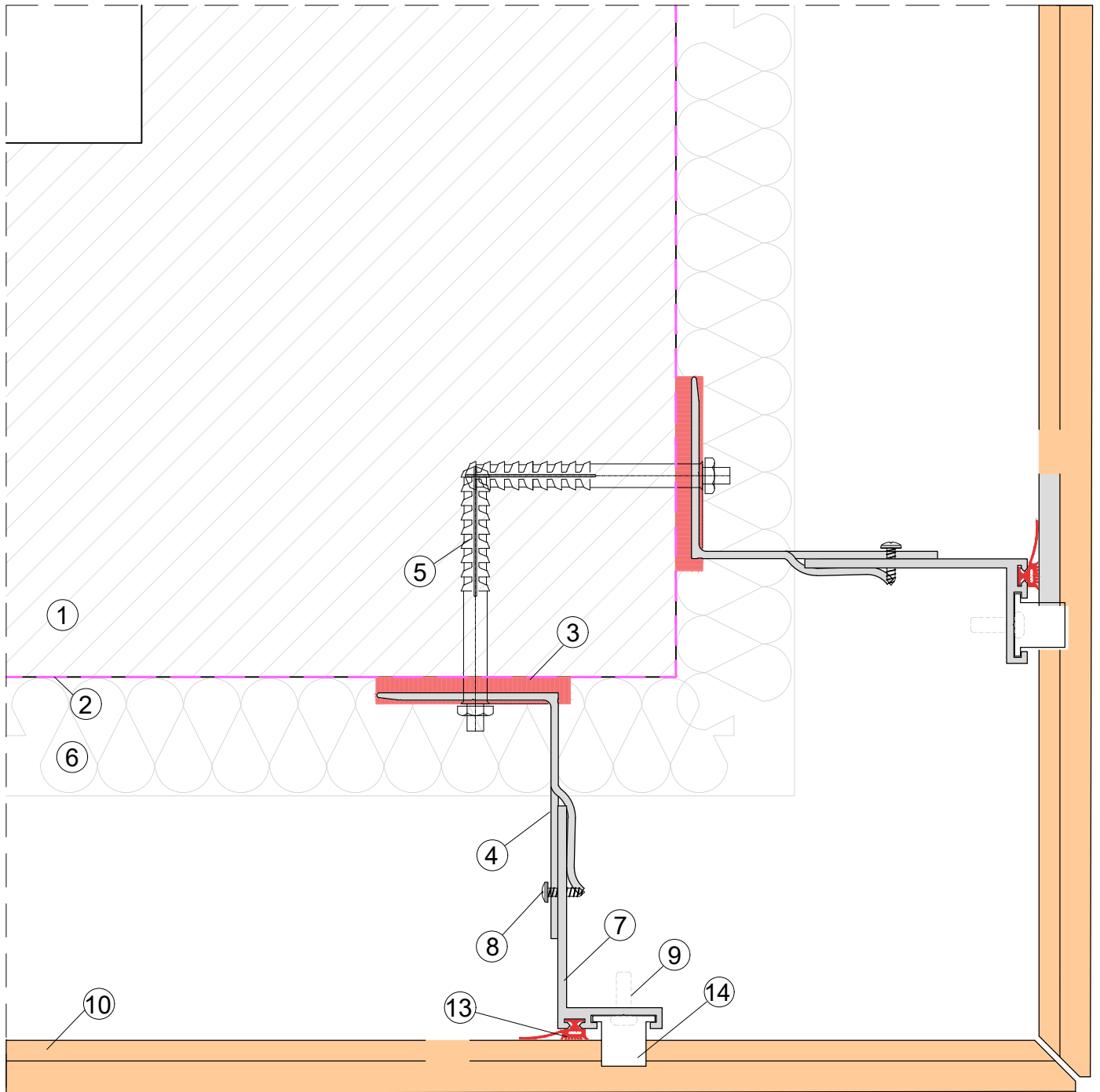
system title:  
**DOUBLE SKIN TERRACOTTA  
 CLADDING SUPPORT SYSTEM**

drawing title:  
**DETAIL 2A**

date:  
**Apr 2019**

scale:  
**NTS**

system no: drawing no: revision:  
**CMS-21 03 01**



**LEGEND**

- 1.CONCRETE / BLOCK WORK 2.BREATHER MEMBRANE 3.THERMAL ISOLATOR 4.SUPPORT BRACKET 5.PRIMARY FIXING 6.THERMAL INSULATION  
 7.T / L / CORNER PROFILE 8.SELF DRILL SCREW 9.DOUBLE SIDED TAPE / NORTON TAPE 10.CLADDING (HPL) 11.RIVET/SCREW 12.VENTILATION 13.RAIL PROFILE 14.CLIP



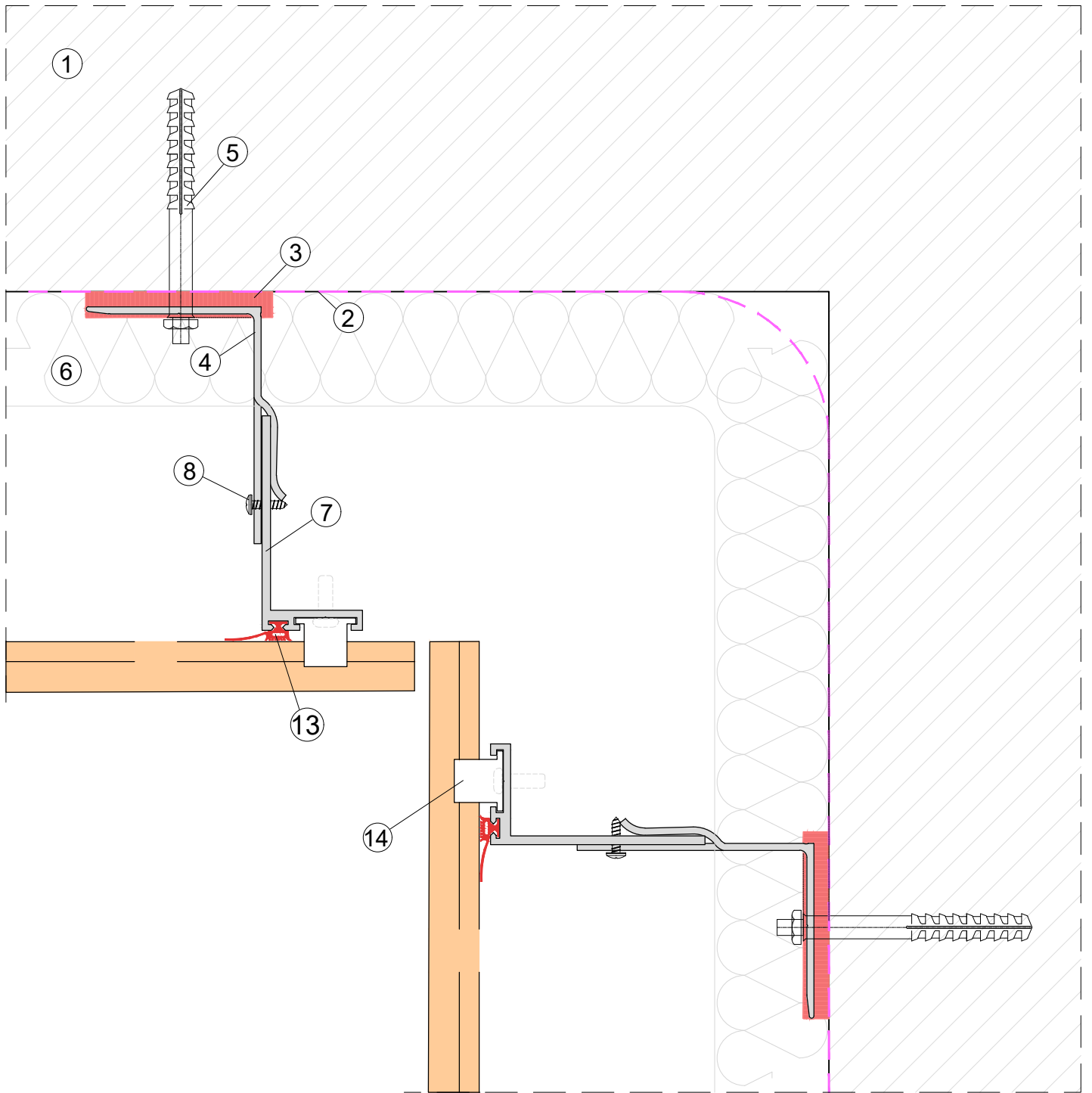
system title:  
**DOUBLE SKIN TERRACOTTA  
 CLADDING SUPPORT SYSTEM**

drawing title:  
**DETAIL 3**

date:  
**Apr 2019**

scale:  
**NTS**

system no: drawing no: revision:  
**CMS-21 04 01**



**LEGEND**

- 1.CONCRETE / BLOCK WORK 2.BREATHER MEMBRANE 3.THERMAL ISOLATOR 4.SUPPORT BRACKET 5.PRIMARY FIXING 6.THERMAL INSULATION  
 7.T / L / CORNER PROFILE 8.SELF DRILL SCREW 9.DOUBLE SIDED TAPE / NORTON TAPE 10.CLADDING (HPL) 11.RIVET/SCREW 12.VENTILATION 13.RAIL PROFILE 14.CLIP

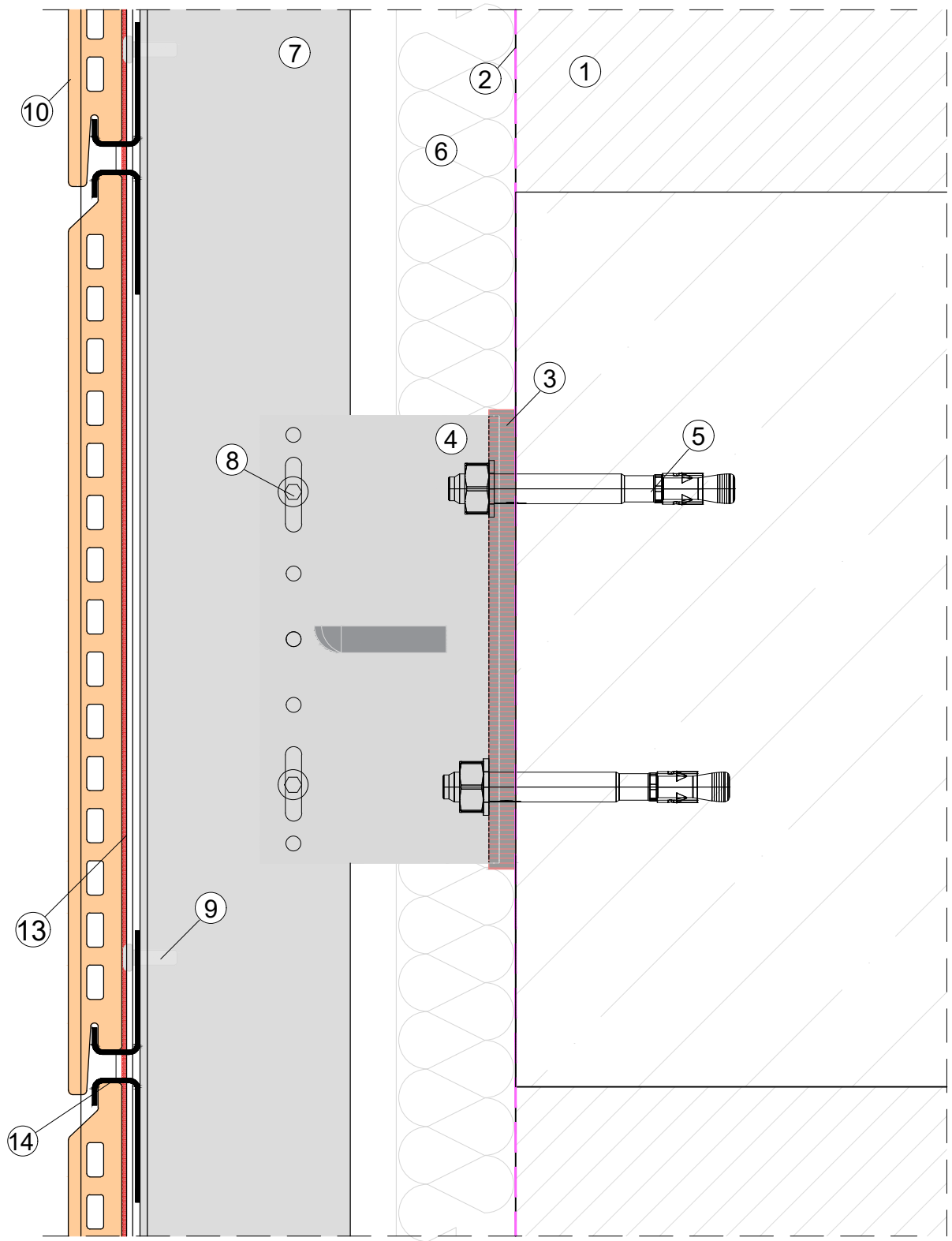


system title:  
**DOUBLE SKIN TERRACOTTA  
 CLADDING SUPPORT SYSTEM**

drawing title:  
**DETAIL 4**

date:  
**Apr 2019** scale:  
**NTS**

system no: drawing no: revision:  
**CMS-21 05 01**



**LEGEND**  
 1. CONCRETE / BLOCK WORK 2. BREATHER MEMBRANE 3. THERMAL ISOLATOR 4. SUPPORT BRACKET 5. PRIMARY FIXING 6. THERMAL INSULATION  
 7. T / L / CORNER PROFILE 8. SELF DRILL SCREW 9. DOUBLE SIDED TAPE / NORTON TAPE 10. CLADDING (HPL) 11. RIVET/SCREW 12. VENTILATION 13. RAIL PROFILE 14. CLIP



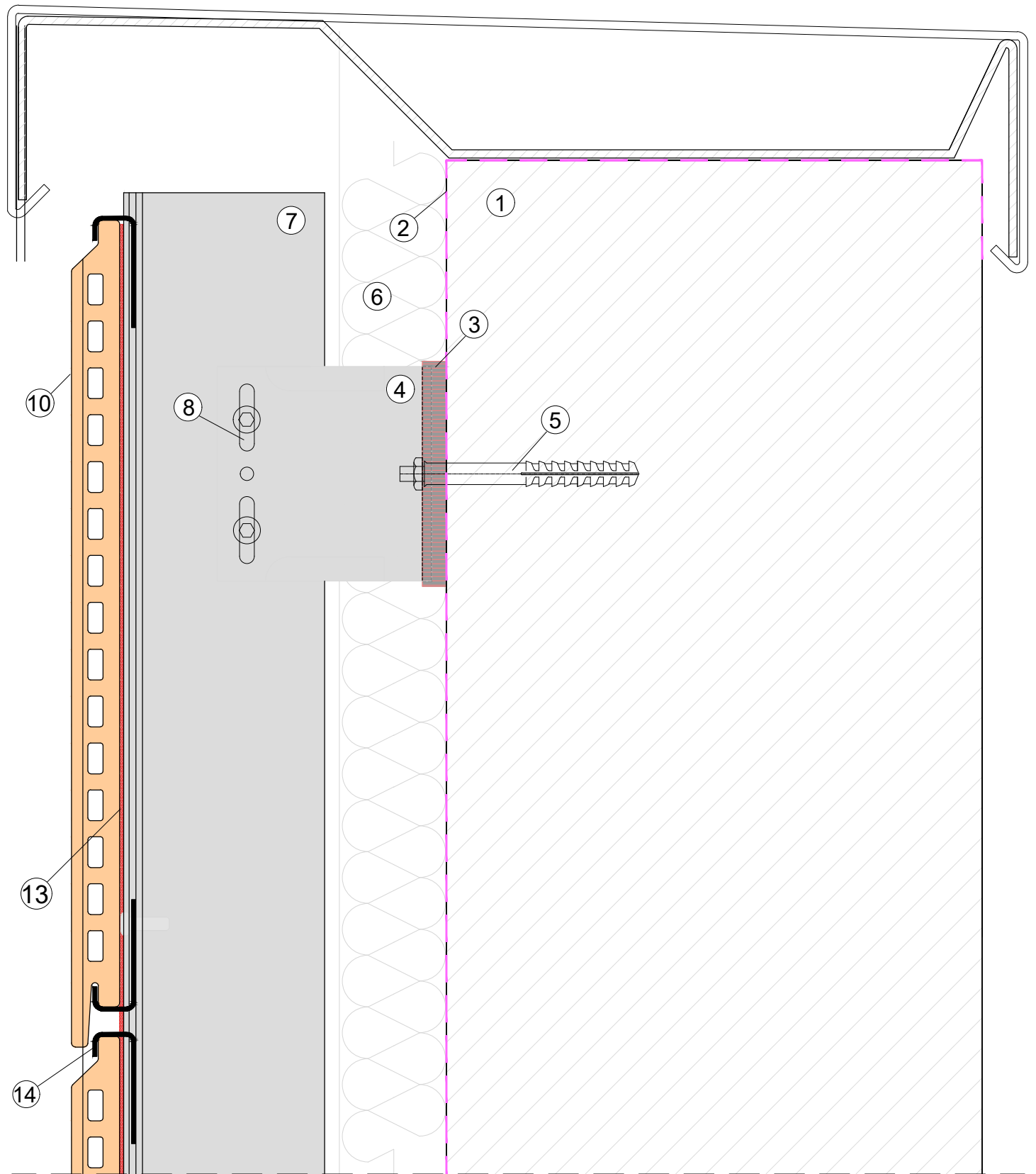
system title:  
**DOUBLE SKIN TERRACOTTA  
 CLADDING SUPPORT SYSTEM**

drawing title:  
**DETAIL 5**

date:  
**Apr 2019**

scale:  
**NTS**

system no: **CMS-21** drawing no: **06** revision: **01**



**LEGEND**  
 1. CONCRETE / BLOCK WORK 2. BREATHER MEMBRANE 3. THERMAL ISOLATOR 4. SUPPORT BRACKET 5. PRIMARY FIXING 6. THERMAL INSULATION  
 7. T / L / CORNER PROFILE 8. SELF DRILL SCREW 9. DOUBLE SIDED TAPE / NORTON TAPE 10. CLADDING (HPL) 11. RIVET/SCREW 12. VENTILATION 13. RAIL PROFILE 14. CLIP



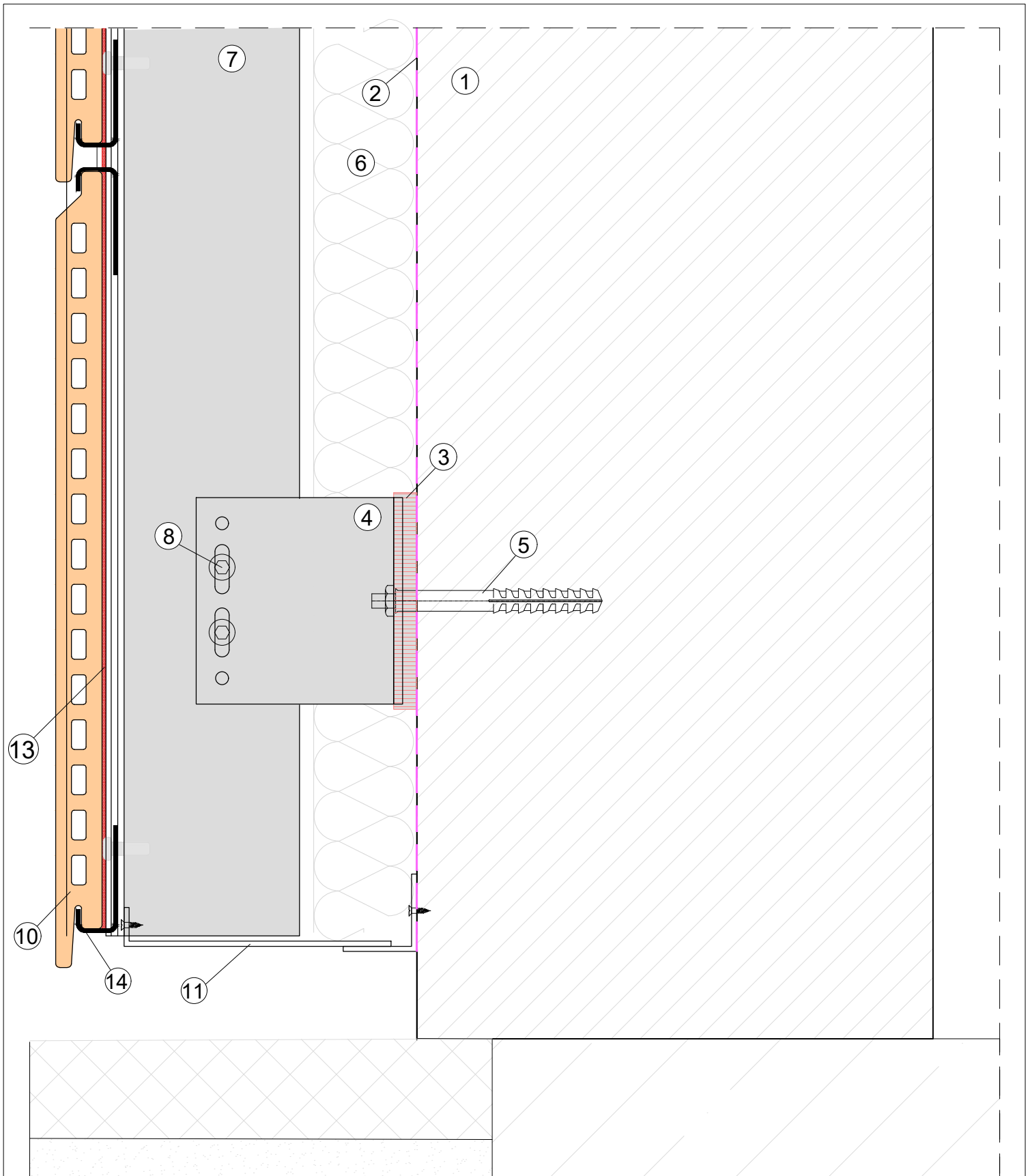
system title:  
**DOUBLE SKIN TERRACOTTA  
 CLADDING SUPPORT SYSTEM**

drawing title:  
**DETAIL 6**

date:  
**Apr 2019**

scale:  
**NTS**

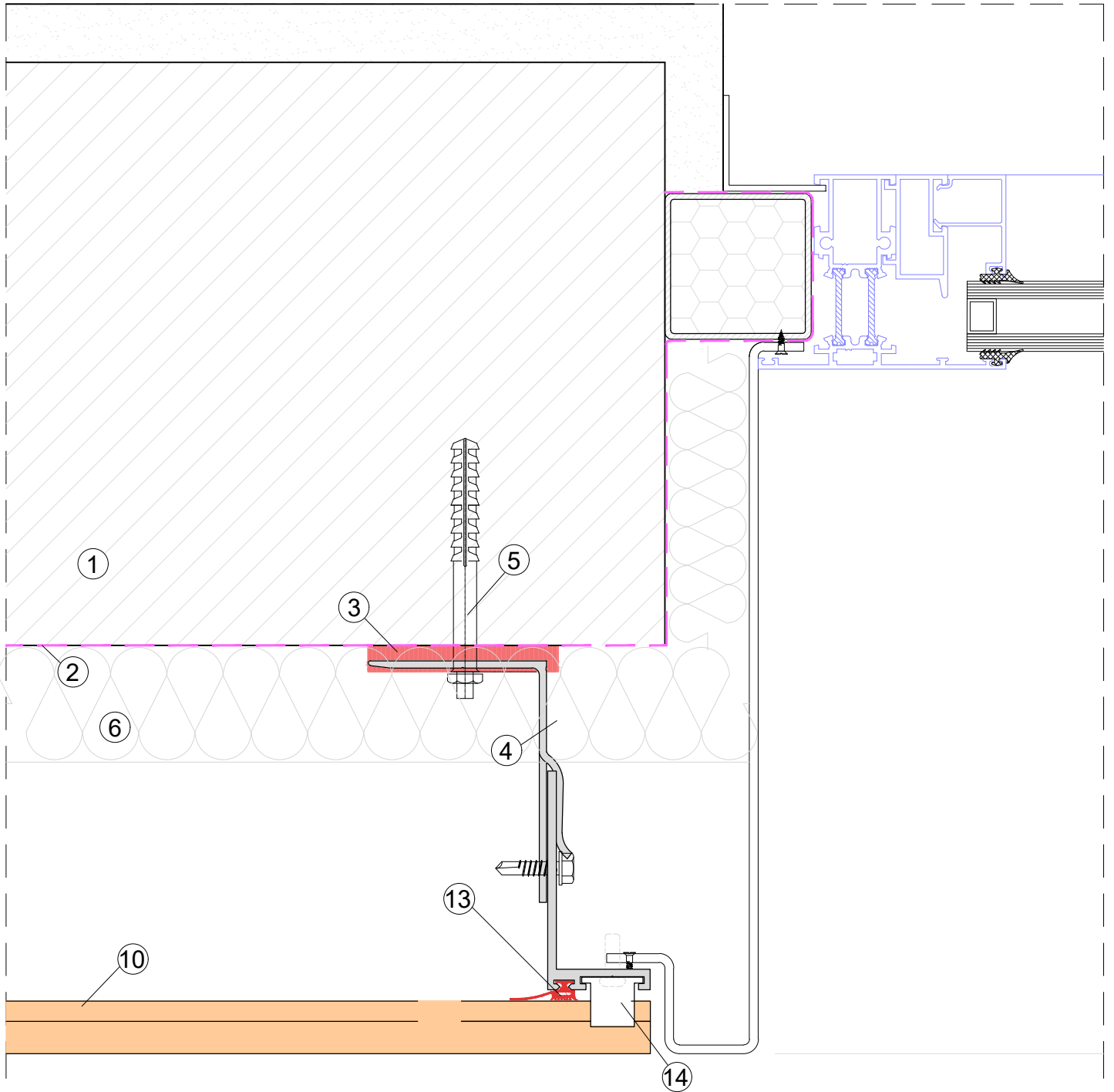
system no: **CMS-21 07** drawing no: revision:  
**01**



**LEGEND**  
 1.CONCRETE / BLOCK WORK 2.BREATHER MEMBRANE 3.THERMAL ISOLATOR 4.SUPPORT BRACKET 5.PRIMARY FIXING 6.THERMAL INSULATION  
 7.T / L / CORNER PROFILE 8.SELF DRILL SCREW 9.DOUBLE SIDED TAPE / NORTON TAPE 10.CLADDING (HPL) 11.RIVET/SCREW 12.VENTILATION 13.RAIL PROFILE 14.CLIP



system title: <b>DOUBLE SKIN TERRACOTTA          CLADDING SUPPORT SYSTEM</b>	date: <b>Apr 2019</b>	scale: <b>NTS</b>
drawing title: <b>DETAIL 7</b>	system no.: <b>CMS-21 08</b>	drawing no.: <b>01</b>



**LEGEND**

1.CONCRETE / BLOCK WORK 2.BREATHER MEMBRANE 3.THERMAL ISOLATOR 4.SUPPORT BRACKET 5.PRIMARY FIXING 6.THERMAL INSULATION  
 7.T / L / CORNER PROFILE 8.SELF DRILL SCREW 9.DOUBLE SIDED TAPE / NORTON TAPE 10.CLADDING (HPL) 11.RIVET/SCREW 12.VENTILATION 13.RAIL PROFILE 14.CLIP

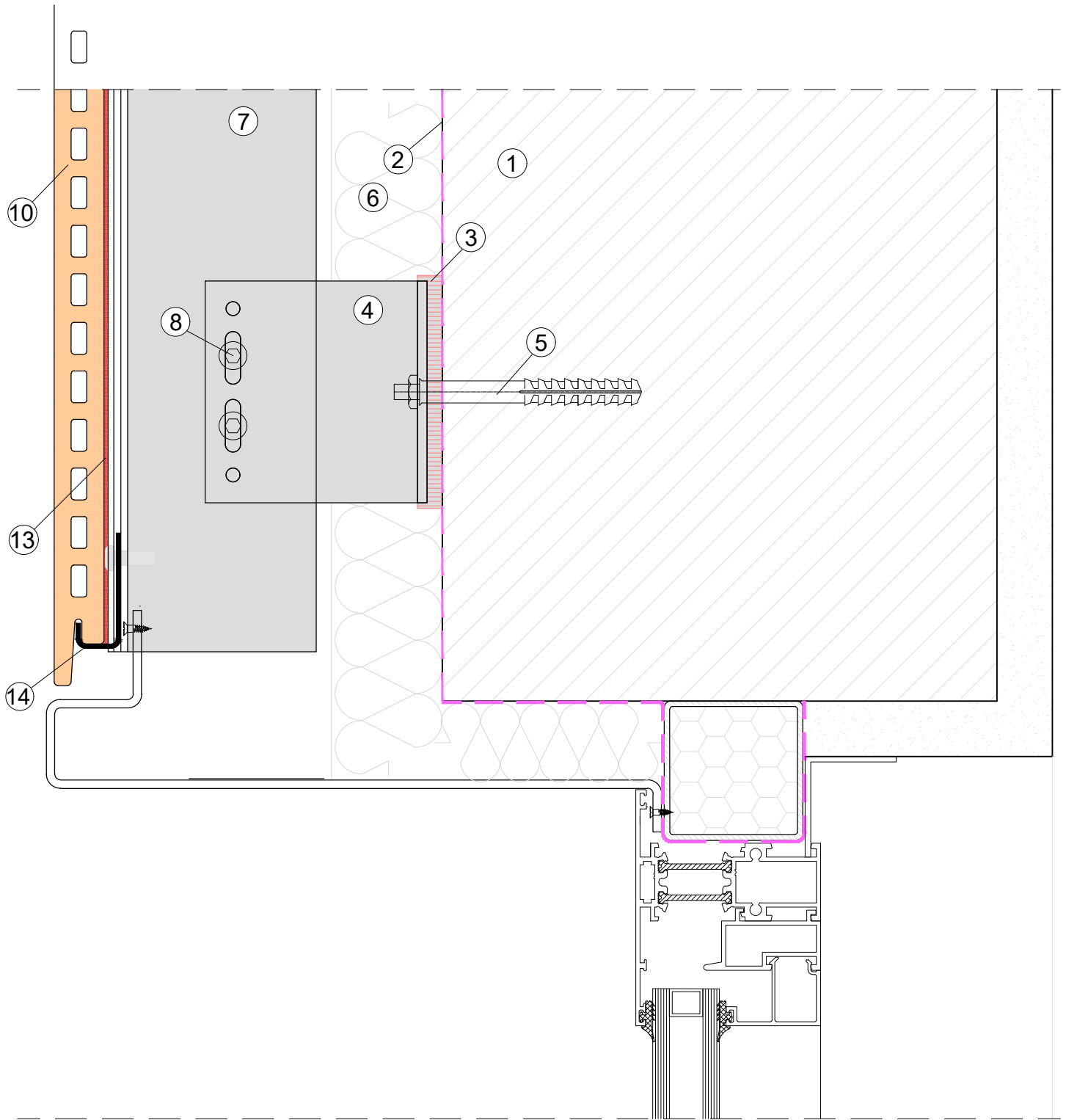


system title:  
**DOUBLE SKIN TERRACOTTA  
 CLADDING SUPPORT SYSTEM**

drawing title:  
**DETAIL 8**

date:  
**Apr 2019** scale:  
**NTS**

system no: drawing no: revision:  
**CMS-21 09 01**

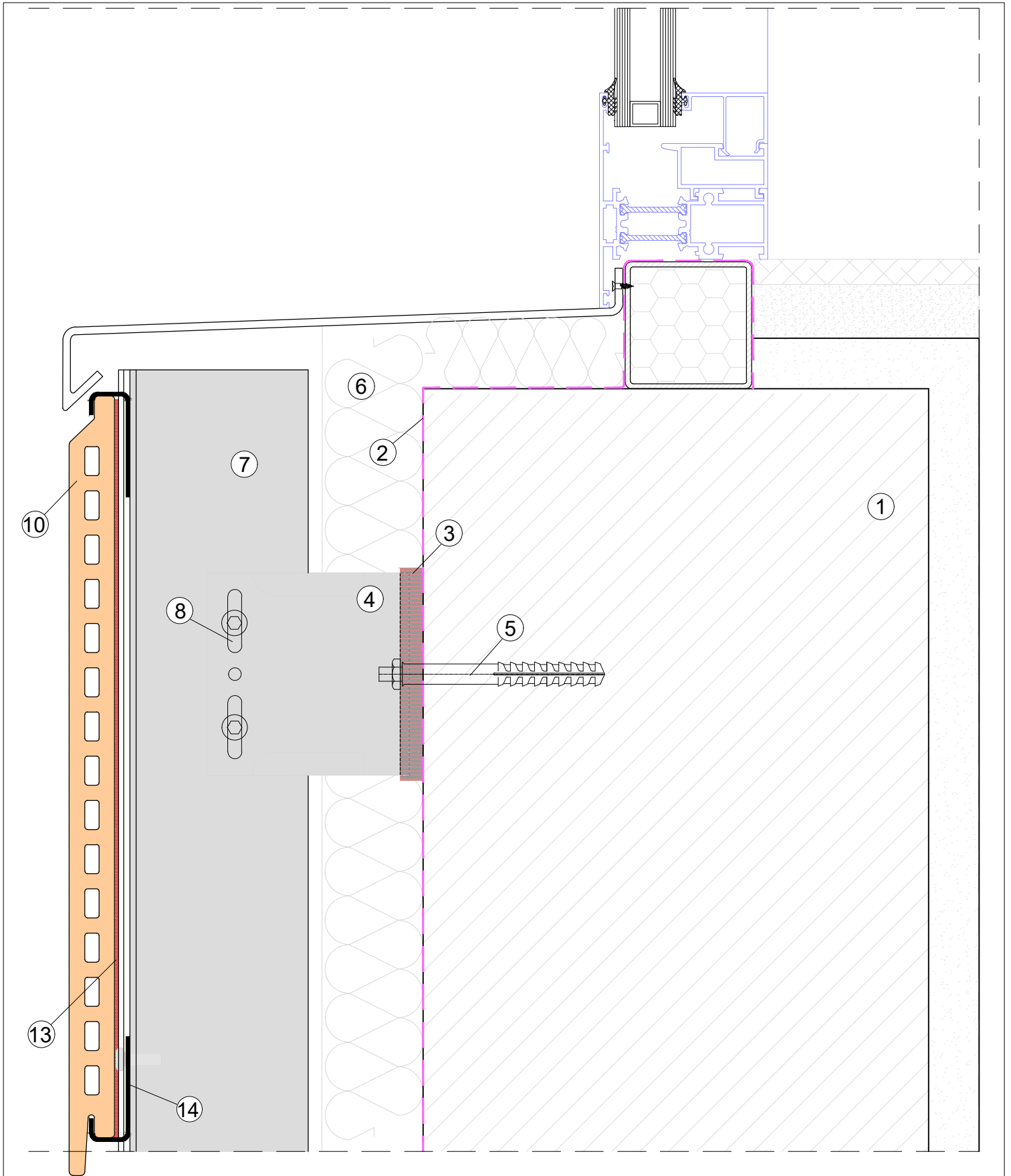


**LEGEND**  
 1.CONCRETE / BLOCK WORK 2.BREATHER MEMBRANE 3.THERMAL ISOLATOR 4.SUPPORT BRACKET 5.PRIMARY FIXING 6.THERMAL INSULATION  
 7.T / L / CORNER PROFILE 8.SELF DRILL SCREW 9.DOUBLE SIDED TAPE / NORTON TAPE 10.CLADDING (HPL) 11.RIVET/SCREW 12.VENTILATION 13.RAIL PROFILE 14.CLIP



system title: <b>DOUBLE SKIN TERRACOTTA          CLADDING SUPPORT SYSTEM</b>	date: <b>Apr 2019</b>	scale: <b>NTS</b>
drawing title: <b>DETAIL 9</b>	system no.: <b>CMS-21 10</b>	drawing no.: <b>01</b>





**LEGEND**  
 1.CONCRETE / BLOCK WORK 2.BREATHER MEMBRANE 3.THERMAL ISOLATOR 4.SUPPORT BRACKET 5.PRIMARY FIXING 6.THERMAL INSULATION  
 7.T / L / CORNER PROFILE 8.SELF DRILL SCREW 9.DOUBLE SIDED TAPE / NORTON TAPE 10.CLADDING (HPL) 11.RIVET/SCREW 12.VENTILATION 13.RAIL PROFILE 14.CLIP

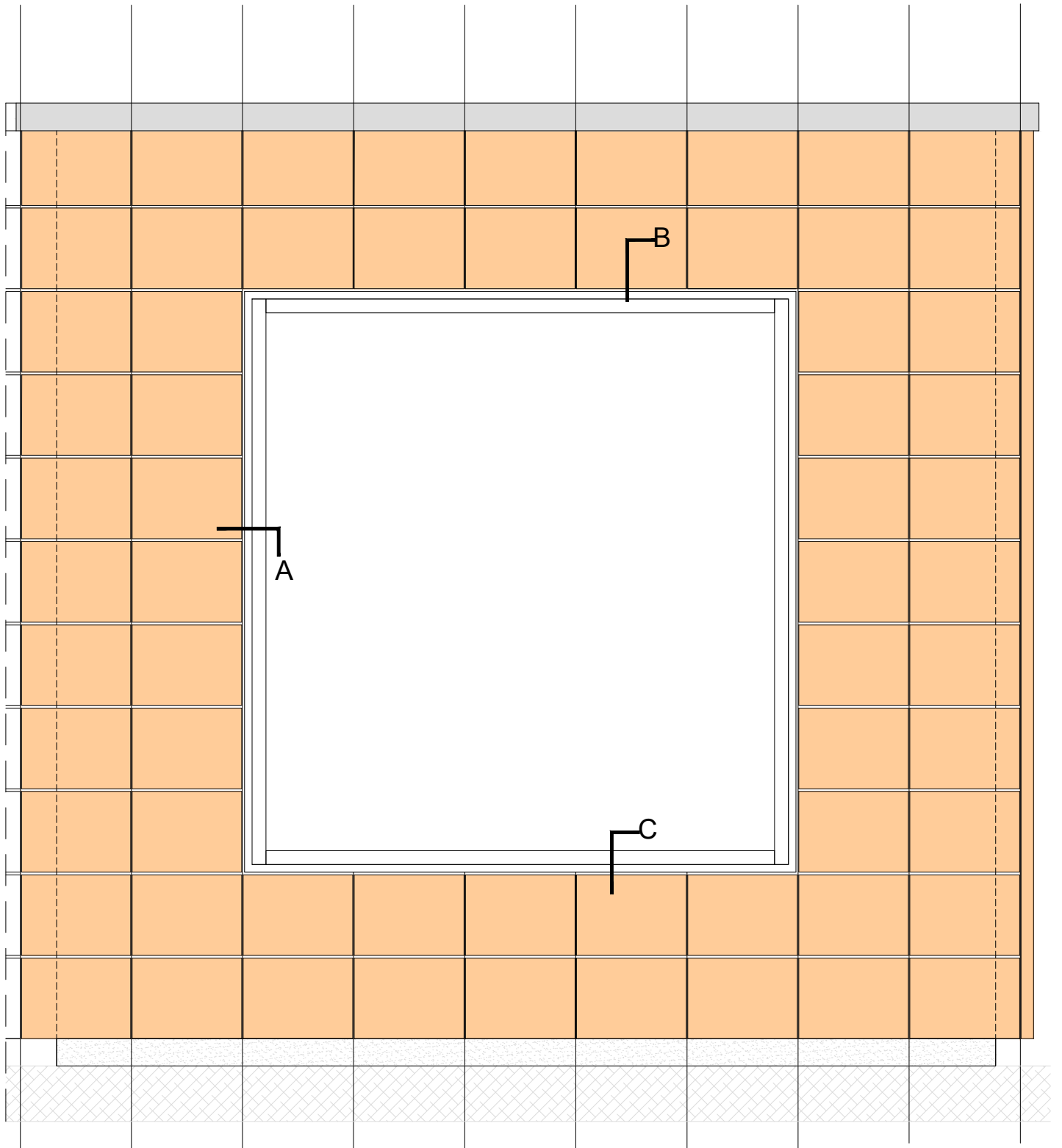


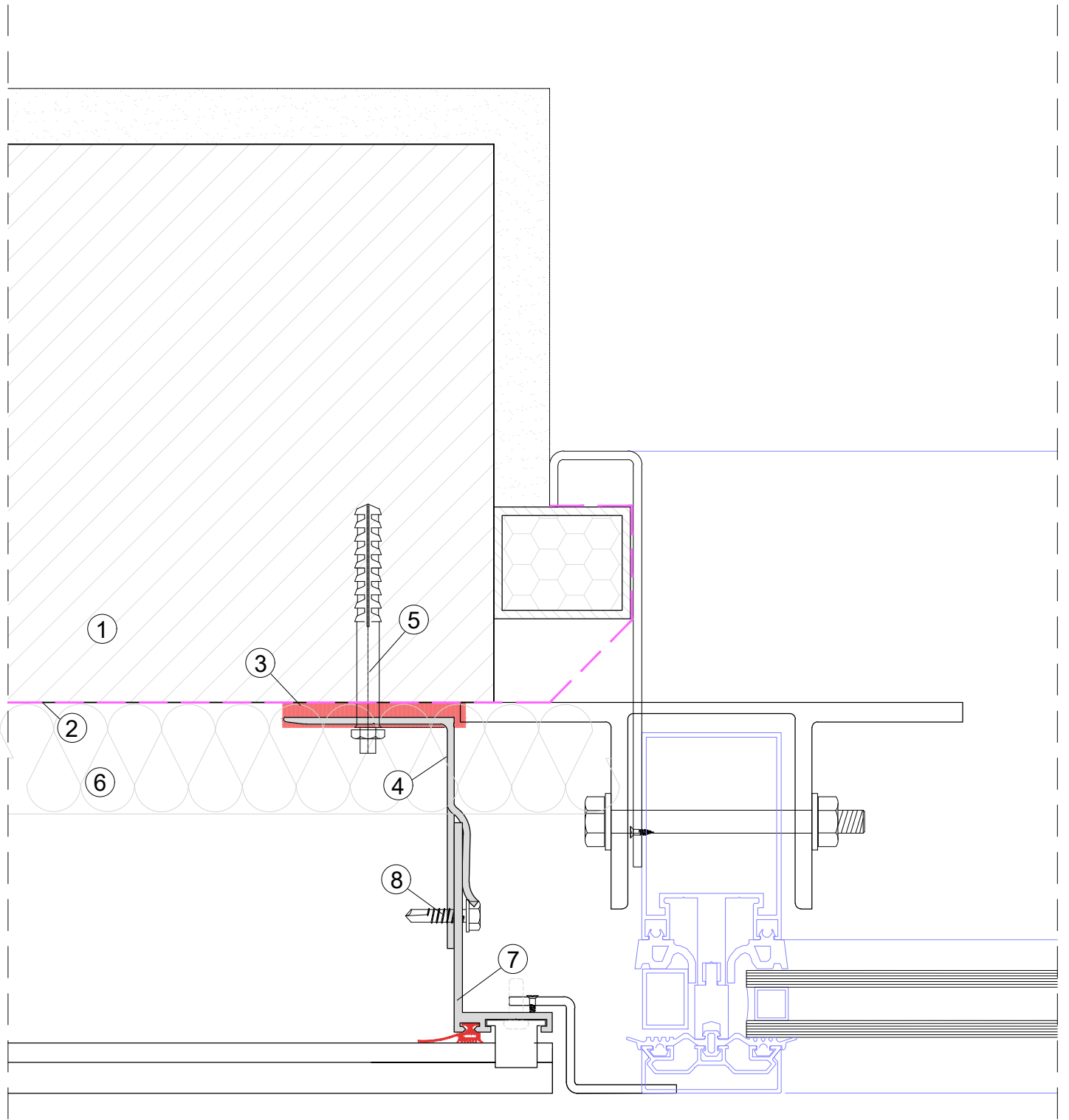
system title:  
**DOUBLE SKIN TERRACOTTA  
 CLADDING SUPPORT SYSTEM**

drawing title:  
**DETAIL 10**

date:  
**Apr 2019** scale:  
**NTS**

system no: drawing no: revision:  
**CMS-21 11 01**





**LEGEND**

- 1.CONCRETE / BLOCK WORK 2.BREATHER MEMBRANE 3.THERMAL ISOLATOR 4.SUPPORT BRACKET 5.PRIMARY FIXING 6.THERMAL INSULATION  
 7.T / L / CORNER PROFILE 8.SELF DRILL SCREW 9.DOUBLE SIDED TAPE / NORTON TAPE 10.CLADDING (HPL) 11.RIVET/SCREW 12.VENTILATION 13.RAIL PROFILE 14.CLIP

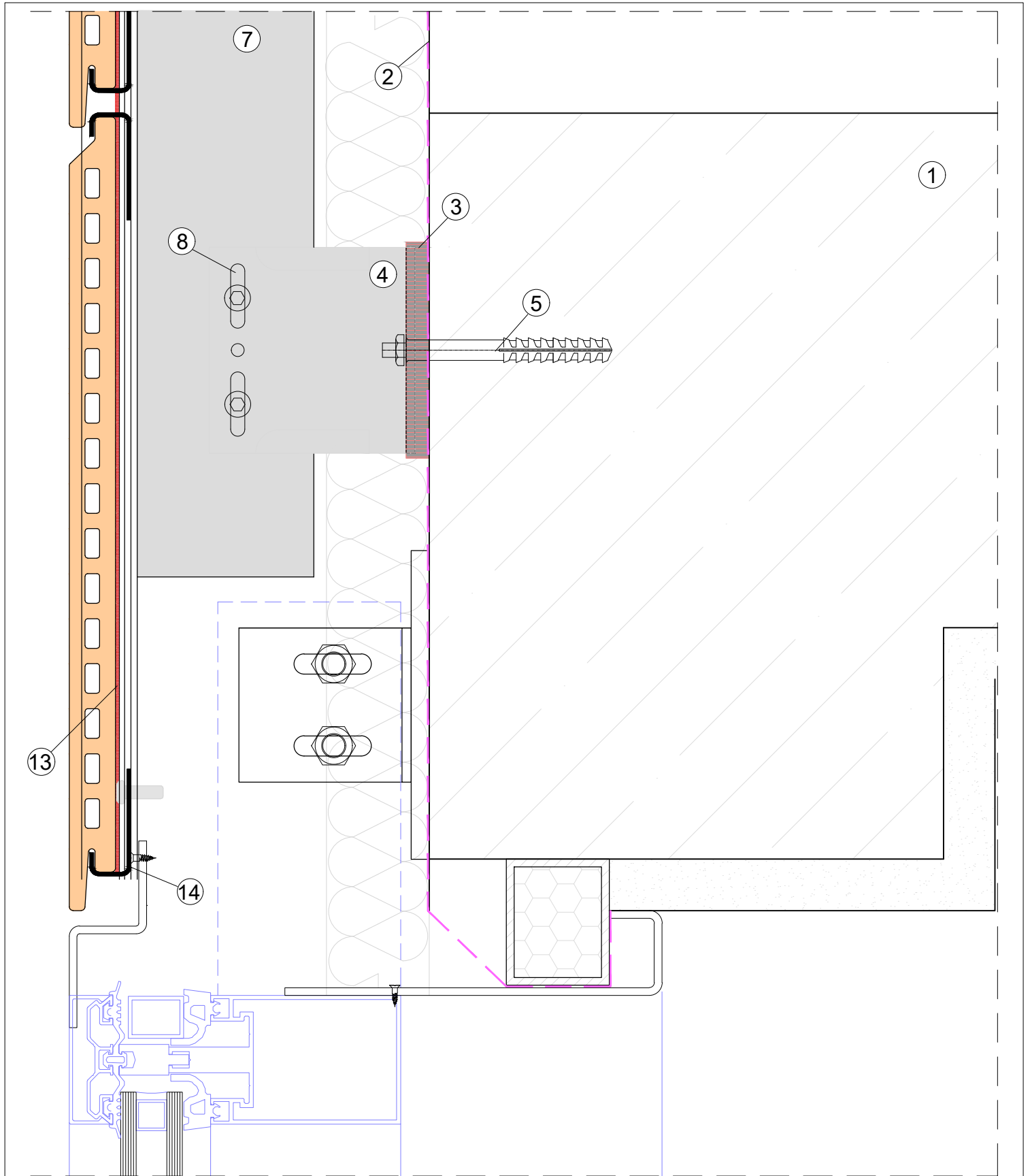


system title:  
**DOUBLE SKIN TERRACOTTA  
 CLADDING SUPPORT SYSTEM**

drawing title:  
**DETAIL A**

date:  
**Apr 2019** scale:  
**NTS**

system no: drawing no: revision:  
**CMS-21 13 01**



**LEGEND**  
 1.CONCRETE / BLOCK WORK 2.BREATHER MEMBRANE 3.THERMAL ISOLATOR 4.SUPPORT BRACKET 5.PRIMARY FIXING 6.THERMAL INSULATION  
 7.T / L / CORNER PROFILE 8.SELF DRILL SCREW 9.DOUBLE SIDED TAPE / NORTON TAPE 10.CLADDING (HPL) 11.RIVET/SCREW 12.VENTILATION 13.RAIL PROFILE 14.CLIP

www.cladmate.co.uk | technical@cladmate.co.uk

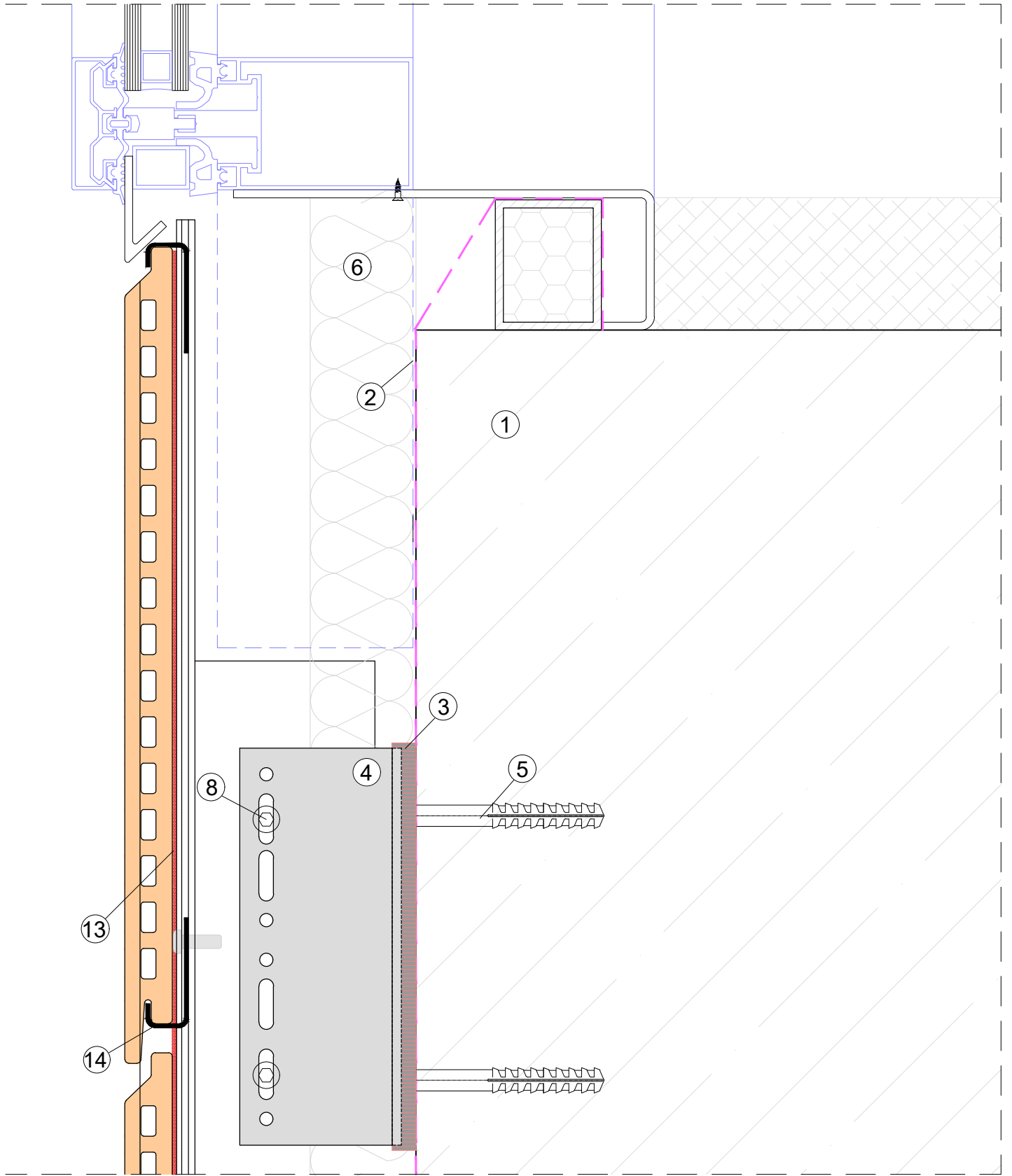
system title:  
**DOUBLE SKIN TERRACOTTA  
 CLADDING SUPPORT SYSTEM**

drawing title:  
**DETAIL B**

date:  
**Apr 2019**

scale:  
**NTS**

system no: **CMS-21** drawing no: **14** revision: **01**



**LEGEND**

- 1.CONCRETE / BLOCK WORK 2.BREATHER MEMBRANE 3.THERMAL ISOLATOR 4.SUPPORT BRACKET 5.PRIMARY FIXING 6.THERMAL INSULATION  
 7.T / L / CORNER PROFILE 8.SELF DRILL SCREW 9.DOUBLE SIDED TAPE / NORTON TAPE 10.CLADDING (HPL) 11.RIVET/SCREW 12.VENTILATION 13.RAIL PROFILE 14.CLIP



www.cladmate.co.uk | technical@cladmate.co.uk

system title:  
**DOUBLE SKIN TERRACOTTA  
 CLADDING SUPPORT SYSTEM**

drawing title:  
**DETAIL C**

date:  
**Apr 2019**

scale:  
**NTS**

system no: drawing no: revision:  
**CMS-21 15 01**