

**Fortis Single Helping Hand Bracket For All Substrates**



Product Code	Size
CMF-SB40-UN	40 mm
CMF-SB60-UN	60 mm
CMF-SB80-UN	80 mm
CMF-SB100-UN	100 mm
CMF-SB120-UN	120 mm
CMF-SB140-UN	140 mm
CMF-SB160-UN	160 mm
CMF-SB180-UN	180 mm
CMF-SB200-UN	200 mm
CMF-SB220-UN	220 mm
CMF-SB240-UN	240 mm
CMF-SB270-UN	270 mm
CMF-SB300-UN	300 mm

**Fortis Double Helping Hand Bracket (6.5mm hole or 11mm hole)**



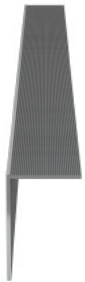
Product Code Steel & Timber	Product Code Masonry & Concrete	Size
CMF-DB40-6.5	CMF-DB40-11	40 mm
CMF-DB60-6.5	CMF-DB60-11	60 mm
CMF-DB80-6.5	CMF-DB80-11	80 mm
CMF-DB100-6.5	CMF-DB100-11	100 mm
CMF-DB120-6.5	CMF-DB120-11	120 mm
CMF-DB140-6.5	CMF-DB140-11	140 mm
CMF-DB160-6.5	CMF-DB160-11	160 mm
CMF-DB180-6.5	CMF-DB180-11	180 mm
CMF-DB200-6.5	CMF-DB200-11	200 mm
CMF-DB220-6.5	CMF-DB220-11	220 mm
CMF-DB240-6.5	CMF-DB240-11	240 mm
CMF-DB270-6.5	CMF-DB270-11	270 mm
CMF-DB300-6.5	CMF-DB300-11	300 mm

**Corner Bracket Holder**



Product Code	Size
CMB48-48-80	80 mm
CMB48-48-150	150 mm

**L Profile**



Product Code	Size
LP50-50-2.2-3000	3000 mm
LP50-50-2.2-6000	6000 mm
LP60-40-2.2-3000	3000 mm
LP60-40-2.2-6000	6000 mm
LP60-40-2.5-3000	3000 mm
LP60-40-2.5-6000	6000 mm

**T Profile**



Product Code	Size
TP60-80-2.2-3000	3000 mm
TP60-80-2.2-6000	6000 mm
TP60-100-2.2-3000	3000 mm
TP60-100-2.2-6000	6000 mm
TP60-120-2.2-3000	3000 mm
TP60-120-2.2-6000	6000 mm
TP60-140-2.2-3000	3000 mm
TP60-140-2.2-6000	6000 mm

**Corner Profile**



Product Code	Size
CMKP48-48-3000	3000 mm
CMKP48-48-6000	6000 mm

**Horizontal Support Rail**



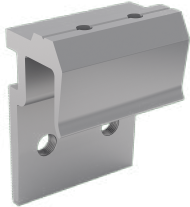
Product Code	Size
HRP-09-60-3000	3000 mm
HRP-09-60-6000	6000 mm

**CMS09**

**Concealed Mechanically Fixed Support System II**  
System Components

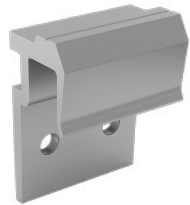


**Horizontal Rail  
Top Clip**



Product Code	Size
HRC-09-TC-50	-

**Horizontal Rail  
Bottom Clip**



Product Code	Size
HRC-09-BC-50	-