

Fortis Single Helping Hand Bracket For All Substrates



Product Code	Size
CMF-SB40-UN	40 mm
CMF-SB60-UN	60 mm
CMF-SB80-UN	80 mm
CMF-SB100-UN	100 mm
CMF-SB120-UN	120 mm
CMF-SB140-UN	140 mm
CMF-SB160-UN	160 mm
CMF-SB180-UN	180 mm
CMF-SB200-UN	200 mm
CMF-SB220-UN	220 mm
CMF-SB240-UN	240 mm
CMF-SB270-UN	270 mm
CMF-SB300-UN	300 mm

Fortis Double Helping Hand Bracket (6.5mm hole or 11mm hole)



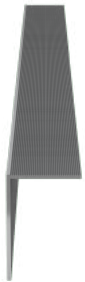
Product Code Steel & Timber	Product Code Masonry & Concrete	Size
CMF-DB40-6.5	CMF-DB40-11	40 mm
CMF-DB60-6.5	CMF-DB60-11	60 mm
CMF-DB80-6.5	CMF-DB80-11	80 mm
CMF-DB100-6.5	CMF-DB100-11	100 mm
CMF-DB120-6.5	CMF-DB120-11	120 mm
CMF-DB140-6.5	CMF-DB140-11	140 mm
CMF-DB160-6.5	CMF-DB160-11	160 mm
CMF-DB180-6.5	CMF-DB180-11	180 mm
CMF-DB200-6.5	CMF-DB200-11	200 mm
CMF-DB220-6.5	CMF-DB220-11	220 mm
CMF-DB240-6.5	CMF-DB240-11	240 mm
CMF-DB270-6.5	CMF-DB270-11	270 mm
CMF-DB300-6.5	CMF-DB300-11	300 mm

Corner Bracket Holder



Product Code	Description	Size
CMB48-48-80	Single	80 mm
CMB48-48-150	Double	150 mm

L Profile



Product Code	Size
LP50-50-2.2-3000	3000 mm
LP50-50-2.2-6000	6000 mm
LP60-40-2.2-3000	3000 mm
LP60-40-2.2-6000	6000 mm
LP60-40-2.5-3000	3000 mm
LP60-40-2.5-6000	6000 mm

T Profile



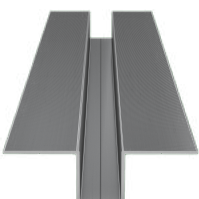
Product Code	Size
TP60-80-2.2-3000	3000 mm
TP60-80-2.2-6000	6000 mm
TP60-100-2.2-3000	3000 mm
TP60-100-2.2-6000	6000 mm
TP60-120-2.2-3000	3000 mm
TP60-120-2.2-6000	6000 mm
TP60-140-2.2-3000	3000 mm
TP60-140-2.2-6000	6000 mm

Corner Profile



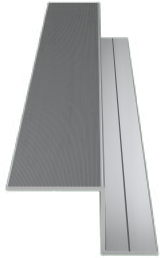
Product Code	Size
CMKP48-48-3000	3000 mm
CMKP48-48-6000	6000 mm

Omega Profile



Product Code	Size
CMOM-25-120-2.4-3000	3000 mm
CMOM-25-120-2.4-6000	6000 mm
CMOM-40-120-2.4-3000	3000 mm
CMOM-40-120-2.4-6000	6000 mm

Z Profile



Product Code	Size
CMZP-25-45-30-2.4-3000	3000 mm
CMZP-25-45-30-2.4-6000	6000 mm
CMZP-40-55-30-2.4-3000	3000 mm
CMZP-40-55-30-2.4-6000	6000 mm

Corner Profile



Product Code	Size
CMKP48-48-3000	3000 mm
CMKP48-48-6000	6000 mm

Corner D Profile DPI



Product Code	Size
DPI-20-20-3000	3000 mm
DPI-20-20-6000	6000 mm

Corner D Profile DPE



Product Code	Size
DPE-11-11-3000	3000 mm
DPE-11-11-6000	6000 mm